

MTEELECTRO[®]

ELECTRICAL CONDUITS AND ACCESSORIES



Company Profile

MTE ELECTRO is a leading Brand For Electrical Materials in Saudi Arabia Owned By Legend Idea Trading Company established in 2019 developed to be the leading manufacturer and sourcing company of electrical raceway products. MTE ELECTRO has various outsourcing factories to make sure we can provide a variety of electrical products for our customers from the world.

To be a premium brand and a reliable supplier, that is why MTE ELECTRO was found, we have friendly sales department, professional production department and purchasing department, strict quality control department, conscientious order operation department every department handle different process, working together to satisfy our customers.

With the rapid development of MTE ELECTRO, our electrical products are used in many projects in Saudi Arabia Such as NEOM, OXAGON, QIDDIYA etc.

MTE EECTRO offers a comprehensive range of electrical raceway products; our main Products are:

- EMT/IMC/RMC Conduits and Fittings
- Weatherproof boxes and covers
- Steel Boxes and Covers
- Grounding and Wire Accessories
- Cable Cleats
- Cable Glands
- Cable Lugs

MTE ELECTRO always want to grow up with our customers, we understand the market needs the good quality products with low cost, we pay much attention to that, make the quality better, try to update to the newest production equipment and more efficient company running system to down the cost of products.

Quality, cost, service are the basic 3 points we pay attention to, we are improving every day to provide better quality, more competitive price, more excellent service to our customers

• HIGH QUALITY

Quality is the most important thing in our business, most of our products are used in many big projects for electrical installation, which has a high requirement for safety, we must make sure our products can be up to the standard, so MTE ELECTRO is always insisting on providing high quality products to all customers.

• COMPETITIVE PRICE

When we are in the market, we have to face the competition, not only on quality, but also on price, we are aware of this point, MTE ELECTRO production teams are exploring the better way for the production cost reduction, then MTE EECTRO can provide better price for customers to fight for more market share.

• EXCELLENT SERVICE

With rich international business experience, MTE ELECTRO can provide excellent service for our customers, we will handle every details in the entire process of the order, make sure, we can do business in most cost-efficient way, help customers shorten the delivery time, save the running cost, win more market share.

MTE ELECTRO products are manufactured at ISO 9001:2015 Certified companies with vast supply record for different industries and different areas around the globe.

EMT/IMC/RMC Conduits and Fittings

Flexible Conduits and Fittings

Flex and Cable Fittings

Service Entrance Caps

Conduit Clamps and Hangers

Conduit Bodies

Steel Junction Boxes and Covers

Weatherproof Boxes and Covers

Grounding and Wire Accessories

Cable Cleats

Cable Lugs

Cable Glands

Approvals



AECOM

الفنار
alfanar

webuild



المواصفات السعودية
Saudi Standards





UL

Certification

REVISION 1.0

Project Name: 14-4800000-10000-N-Construction - JPS

Client: AECOM

Project Manager: AECOM

Project Engineer: AECOM

Project Designer: AECOM

Project Checker: AECOM

Project Approver: AECOM

Project Date: 14-01-2018

Project Location: 14-4800000-10000-N-Construction - JPS

Project Description: 14-4800000-10000-N-Construction - JPS

Project Status: 14-4800000-10000-N-Construction - JPS

Project Notes: 14-4800000-10000-N-Construction - JPS

REVISION 1.0

Project Name: 14-4800000-10000-N-Construction - JPS

Client: AECOM

Project Manager: AECOM

Project Engineer: AECOM

Project Designer: AECOM

Project Checker: AECOM

Project Approver: AECOM

Project Date: 14-01-2018

Project Location: 14-4800000-10000-N-Construction - JPS

Project Description: 14-4800000-10000-N-Construction - JPS

Project Status: 14-4800000-10000-N-Construction - JPS

Project Notes: 14-4800000-10000-N-Construction - JPS

REVISION 1.0

Project Name: 14-4800000-10000-N-Construction - JPS

Client: AECOM

Project Manager: AECOM

Project Engineer: AECOM

Project Designer: AECOM

Project Checker: AECOM

Project Approver: AECOM

Project Date: 14-01-2018

Project Location: 14-4800000-10000-N-Construction - JPS

Project Description: 14-4800000-10000-N-Construction - JPS

Project Status: 14-4800000-10000-N-Construction - JPS

Project Notes: 14-4800000-10000-N-Construction - JPS

REVISION 1.0

Project Name: 14-4800000-10000-N-Construction - JPS

Client: AECOM

Project Manager: AECOM

Project Engineer: AECOM

Project Designer: AECOM

Project Checker: AECOM

Project Approver: AECOM

Project Date: 14-01-2018

Project Location: 14-4800000-10000-N-Construction - JPS

Project Description: 14-4800000-10000-N-Construction - JPS

Project Status: 14-4800000-10000-N-Construction - JPS

Project Notes: 14-4800000-10000-N-Construction - JPS

REVISION 1.0

Project Name: 14-4800000-10000-N-Construction - JPS

Client: AECOM

Project Manager: AECOM

Project Engineer: AECOM

Project Designer: AECOM

Project Checker: AECOM

Project Approver: AECOM

Project Date: 14-01-2018

Project Location: 14-4800000-10000-N-Construction - JPS

Project Description: 14-4800000-10000-N-Construction - JPS

Project Status: 14-4800000-10000-N-Construction - JPS

Project Notes: 14-4800000-10000-N-Construction - JPS



المواصفات
Saudi Standards



Table of Contents

CONTENTS	PAGE
EMT Conduits	005-006
IMC Conduits	005-007
RMC/RGS Conduits	005-008
EMT IMC RSC Elbows	009-010
Flexible Conduits	011-015
EMT Fittings	016-027
IMC and Rigid Fittings	028-046
Liquid Tight Fittings	047-054
Flexible Conduit Fittings	055-069
Service Entrance Caps	070-071
Conduit Support, Clamps and Hangers	072-080
Conduit Bodies	081-095
Electrical Boxes and Covers	096-105
Weatherproof Boxes	106-114
Grounding and Wire Accessories	115-119
Cable Cleats	120-128
Contact Us	129-129



UL797 Electrical Metallic Tubing
UL 1242 Intermediate Metal Conduit
UL 6 Rigid Steel Conduit
EMT Elbow 45 Degree
EMT Elbow 90 Degree
IMC Elbow 45 Degree
IMC Elbow 90 Degree
RSC Elbow 45 Degree
RSC Elbow 90 Degree
Rigid Conduit Nipple

EMT, IMC & RMC/RGS Conduits and Elbows

MTE ELECTRO[®]
ELECTRICAL CONDUITS AND ACCESSORIES

Electrical Metallic Tubing (EMT Conduit)

UL797 STANDARD, ANSI C80.3

MTE ELECTRO Electrical metallic tubing (EMT), also commonly called thin-wall, is a listed steel raceway of circular cross section, which is unthreaded, and nominally 10FT long. EMT is available in trade sizes 1/2 through 4. The outside and inside is galvanized for corrosion protection (Zinc Coating of 180+ GSM) and in addition inside has a corrosion-resistant zinc organic coating.

MTE ELECTRO Electrical metallic tubing (EMT) is a tube used to protect and route electrical wiring in a building or structure. It offers easy bending, cutting and joining during installation.

MTE ELECTRO Electrical metallic tubing (EMT) shall be carbon steel, electrically welded, galvanized and produced to the following specifications

- UL standard for Electrical Metallic tubing - steel, UL797
- American National Standards Institute C80.3



MTE ELECTRO Electrical metallic tubing (EMT) is listed to UL Safety Standard 797 and manufactured in accordance with ANSI C80.3. details shall accord with following table.

CATALOG NUM BER	TRADE SIZE	OUTSIDE DIAMETER		WALL THICKNESS		LENGTH		WEIGHT
		INCH	M M	INCH	M M	FEET	M M	KG/MTR
EMT050	1/2"	0.706	17.93	0.042	1.07	10	3050	0.439
EMT075	3/4"	0.922	23.42	0.049	1.25	10	3050	0.669
EMT100	1"	1.163	29.54	0.057	1.45	10	3050	0.990
EMT125	1-1/4"	1.510	38.35	0.065	1.65	10	3050	1.469
EMT150	1-1/2"	1.740	44.20	0.065	1.65	10	3050	1.698
EMT200	2"	2.197	55.80	0.065	1.65	10	3050	2.170
EMT250	2-1/2"	2.875	73.03	0.072	1.83	10	3050	3.177
EMT300	3"	3.500	88.90	0.072	1.83	10	3050	3.879
EMT350	3-1/2"	4.000	101.60	0.083	2.11	10	3050	5.170
EMT400	4"	4.500	114.30	0.083	2.11	10	3050	5.750

Notes: Applicable tolerance

Length: 10ft±1/4in. 3050mm ±6.35mm.

Outside Diameter: 1/2" to 2" ±0.005in. (16mm to 53mm ±0.13mm).

2-1/2" ±0.010in. (63mm ±0.25mm)

3" ±0.015in. (78 ±0.38mm).

3-1/2" to 4" ±0.020in. (91mm to 103mm ±0.51mm)



الوصفات السعودية
Saudi Standards



Intermediate Metal Conduit (IMC Conduit)

UL 1242 STANDARD, ANSI C80.6

MTE ELECTRO Intermediate Metal Conduit is a circular cross-section canalization used for Electrical instalations in any type of building. MTE ELECTRO Intermediate Metal Conduit is threaded on both ends. Intermediate Metal Conduit removes any sharp or rough edge to protect the cables when installations.

MTE ELECTRO Intermediate Metal Conduit is manufactured according to

- UL standard for Intermediate Metal Conduit - steel, UL1242
- American National Standards Institute, Inc.-ANSI C80.6



MTE ELECTRO Intermediate Metal Conduit (IMC) is listed to UL Safety Standard 1242 and manufactured in accordance with ANSI C80.6. details shall accord with following table

CATALOG NUM BER	TRADE SIZE	OUTSIDE DIAM ETER		WALL THICKNESS		LENGTH		WEIGHT
		INCH	M M	INCH	M M	FEET	M M	
IMC050	1/2"	0.815	20.70	0.077	1.97	10	3050	0.4179
IMC075	3/4"	1.029	26.26	0.082	2.10	10	3050	0.5666
IMC100	1"	1.290	32.77	0.092	2.35	10	3050	0.8031
IMC125	1-1/4"	1.638	41.59	0.094	2.41	10	3050	1.0663
IMC150	1-1/2"	1.883	47.82	0.100	2.54	10	3050	1.3087
IMC200	2"	2.360	59.93	0.105	2.67	10	3050	1.7266
IMC250	2-1/2"	2.857	72.57	0.150	3.81	10	3050	2.9744
IMC300	3"	3.476	88.29	0.150	3.81	10	3050	3.6629
IMC350	3-1/2"	3.971	100.86	0.150	3.81	10	3050	4.2429
IMC400	4"	4.466	113.44	0.150	3.81	10	3050	4.7218

Notes: Applicable tolerance
Length: 10ft ±1/5in. 3050mm ±5.08mm.
Different thickness or length is available.



الوصفات السعودية
Saudi Standards



Rigid Galvanized Steel Conduit(RGS conduit/RMC)
UL6 STANDARD, ANSI C80.1

MTE ELECTRO Rigid Metallic Conduit (RMC/RGS) is galvanized steel tubing, with a tubing wall that is thick enough to allow it to be threaded. Its common applications are in commercial and industrial construction.

MTE ELECTRO Rigid Metallic Conduit (RMC/RGS) is Hot-dipped galvanized on both external and internal.

MTE ELECTRO Rigid Metallic Conduit (RMC/RGS) is manufactured according to:

- American National Standards Institute, Inc.-ANSI C80.1
- UL standard for rigid steel conduit - steel, UL6



MTE ELECTRO Rigid Metallic Conduit (RMC/RGS) is listed to UL Safety Standard 6 and manufactured in accordance with ANSI C80.1 . details shall accord with following table.

CATALOG NUM BER	TRADE SIZE	OUTSIDE DIAM ETER		WALL THICKNESS		LENGTH		WEIGHT
		INCH	M M	INCH	M M	FEET	M M	
RMC050	1/2"	0.840	21.34	0.104	2.64	10	3050	1.1737
RMC075	3/4"	1.050	26.67	0.107	2.72	10	3050	1.5606
RMC100	1"	1.315	33.40	0.126	3.20	10	3050	2.2754
RMC125	1-1/4"	1.660	42.16	0.133	3.38	10	3050	2.9902
RMC150	1-1/2"	1.900	48.26	0.138	3.51	10	3050	3.7016
RMC200	2"	2.375	60.33	0.146	3.71	10	3050	4.9377
RMC250	2-1/2"	2.875	73.03	0.193	4.90	10	3050	7.8360
RMC300	3"	3.500	88.90	0.205	5.21	10	3050	10.1508
RMC350	3-1/2"	4.000	101.60	0.215	5.46	10	3050	12.3573
RMC400	4"	4.500	114.30	0.225	5.72	10	3050	14.4590
RMC500	5"	5.563	141.30	0.245	6.22	10	3050	17.5672
RMC600	6"	6.625	168.30	0.268	6.80	10	3050	25.9573

Notes: Applicable tolerance
Length: 10ft ±1/5in. 3050mm ±5.08mm.
Outside Diameter: 1/2" to 2 " ± 0.015 in.(21.3mm to 60.3mm ±0.38 mm).
2-1/2" to 4" ±0.025in. (73mm ±0.64mm).
5" to 6" ±1%



Electrical Metallic Tubing (EMT) Elbow
UL797 STANDARD, ANSI C80.3

Material: Steel
Type:45° or 90°
Surface Finish: Pre-galvanized or hot dipped galvanized

Applications

EMT elbows are to be installed on conduit raceways for the interconnection of conduit runs and other fittings.



CATALOG NUMBER		TRADE SIZE
ELB-A-050	ELB-B-050	1/2"
ELB-A-075	ELB-B-075	3/4"
ELB-A-100	ELB-B-100	1"
ELB-A-125	ELB-B-125	1-1/4"
ELB-A-150	ELB-B-150	1-1/2"
ELB-A-200	ELB-B-200	2"
ELB-A-250	ELB-B-250	2-1/2"
ELB-A-300	ELB-B-300	3"
ELB-A-350	ELB-B-350	3-1/2"
ELB-A-400	ELB-B-400	4"

Intermediate Metal Conduit (IMC) Elbow
UL1242 STANDARD, ANSI C80.6

Material: Steel
Type: 45° or 90°
Surface Finish: Pre-galvanized or hot dipped galvanized

Applications

IMC elbows are used in conjunction with rigid couplings to make a 45° or 90° bend between two lengths of threaded Rigid or IMC conduit.



CATALOG NUMBER	TRADE SIZE
ILB-050	1/2"
ILB-075	3/4"
ILB-100	1"
ILB-125	1-1/4"
ILB-150	1-1/2"
ILB-200	2"
ILB-250	2-1/2"
ILB-300	3"
ILB-350	3-1/2"
ILB-400	4"



Rigid Metallic Conduit (RMC/RGS) Elbow
UL6 STANDARD, ANSI C80.1

Material: Steel
Type: 45° or 90°
Surface Finish: Hot dipped galvanized

Applications

RMC/RGS elbows are used in conjunction with rigid couplings to make a 45° or 90° bend between two lengths of threaded rigid or IMC conduit.



CATALOG NUMBER		TRADE SIZE
RLB-A-050	RLB-B-050	1/2"
RLB-A-075	RLB-B-075	3/4"
RLB-A-100	RLB-B-100	1"
RLB-A-125	RLB-B-125	1-1/4"
RLB-A-150	RLB-B-150	1-1/2"
RLB-A-200	RLB-B-200	2"
RLB-A-250	RLB-B-250	2-1/2"
RLB-A-300	RLB-B-300	3"
RLB-A-350	RLB-B-350	3-1/2"
RLB-A-400	RLB-B-400	4"
RLB-A-500	RLB-B-500	5"
RLB-A-600	RLB-B-600	6"

Conduit Nipples

Material: Steel
Type: NPT thread
Surface Finish: Hot dipped galvanized

Applications

MTE ELECTRO IMC/Rigid nipples are used to extend a length of threaded Rigid or IMC conduit and to connect two steel outlet boxes or metal enclosures in wet or dry locations.



CATALOG NUM BER	TRADE SIZE
CNPL050	1/2"
CNPL075	3/4"
CNPL100	1"
CNPL125	1-1/4"
CNPL150	1-1/2"
CNPL200	2"
CNPL250	2-1/2"
CNPL300	3"
CNPL350	3-1/2"
CNPL400	4"
CNPL500	5"
CNPL600	6"

The length of nipples can be, 1-1/2", 2", 2-1/2", 3", 3-1/2", 4", 5", 6", 8", 10", 12".



المواصفات السعودية
Saudi Standards





**Metal Flexible Conduit/Galvanized Steel Flexible Conduit
(Reduced Wall)**

**PVC Coated Flexible Steel Conduit
Liquid Tight Flexible Steel Conduit**

Flexible Conduits

Metal/Galvanized Steel Flexible Conduit (Reduced Wall)

Material: Galvanized Steel, 0.25MM Thickness and Corrosion resistive zinc coating of 50 GSM+

Color: Silver

Working Temperature: - 30°C TO 180°C

Applications

- Under Floor Wiring & office Block.
- Areas subject to heat and sparks (foundries, welding, etc)mal at mospheric temperature.
- Used as mechanical protection for insulated electrical cables and wires that are functional in normal atmospheric temperature.
- Under floor applications for computer/floor boxes.
- For furnace/oven applications.
- Used for connecting machines to controls Elevator, Metro Stations, CCTV Camera etc.



Features

- High mechanical strength.
- Inherent low fire hazard product.
- Superior crush proof qualities

CATALOG NUM BER	TRADE SIZE	INSIDE DIAM ETER		OUTSIDE DIAM ETER		BENDING	LENGTH
		M IN(M M)	M AX(M M)	M IN(M M)	M AX(M M)	RADIUS	M /ROLL
MFC-038	3/8"	9.52	9.96	14.22	15.49	50	50
MFC-050	1/2"	15.88	16.38	21.84	23.37	75	30
MFC-075	3/4"	20.62	21.21	26.54	28.07	100	30
MFC-100	1"	25.40	26.42	33.02	35.05	125	30
MFC-125	1-1/4"	31.75	33.02	39.37	41.40	160	25
MFC-150	1-1/2"	38.10	40.01	46.99	49.53	190	25
MFC-200	2"	50.80	52.83	59.69	62.23	255	25
MFC-250	2-1/2"	> 63.5		72.64	77.72	320	10
MFC-300	3"	> 76.2		85.34	90.42	380	10
MFC-400	4"	> 101.6		110.74	115.82	510	10

Notes:Length of roll can be made according to customers' requirements.



المواصفات السعودية
Saudi Standards



Metal/Galvanized Steel Flexible Conduit - Square Lock

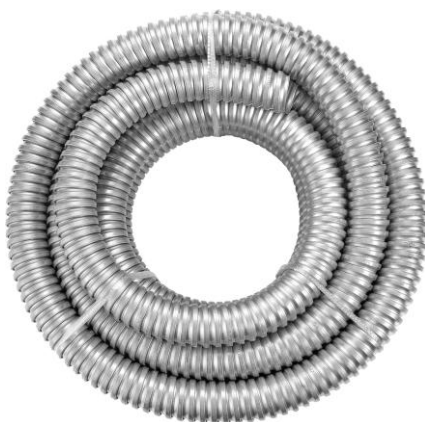
Material: Galvanized Steel, 0.3MM Thickness and Corrosion resistive zinc coating of 90GSM+

Color: Silver

Working Temperature: - 30°C TO 180°C

Applications

- Under Floor Wiring & office Block.
- Areas subject to heat and sparks (foundries, welding, etc)mal at mospheric temperature.
- Used as mechanical protection for insulated electrical cables and wires that are functional in normal atmospheric temperatur e.
- Under floor applications for computer/floor boxes.
- For furnace/oven applications.
- Used for connecting machines to controls Elevator, Metro Stations, CCTV Camera etc.



Features

- IP rating: IP40 with standard fittings.
- Adopting galvanized steel band with special insulation treatment.
- National standard thickness of production, having super soft and excellent bending performance.
- Superior crush proof qualities, equivalent to UL 1

CATALOG NUM BER	TRADE SIZE	INSIDE DIAM ETER		OUTSIDE DIAM ETER		BENDING	LENGTH
		M IN(M M)	M AX(M M)	M IN(M M)	M AX(M M)	RADIUS	M /ROLL
MFC-025U	1/4"	9.70	10.20	13.50	14.00	40	100
MFC-038U	3/8"	12.30	12.80	15.70	16.20	50	100
MFC-050U	1/2"	15.80	16.30	19.20	19.70	65	30
MFC-075U	3/4"	20.70	21.20	24.50	25.10	75	30
MFC-100U	1"	26.00	26.60	30.40	31.00	100	30
MFC-125U	1-1/4"	34.70	35.40	39.60	40.30	125	25
MFC-150U	1-1/2"	40.00	40.60	45.20	48.80	150	25
MFC-200U	2"	51.30	51.90	56.50	57.10	175	25
MFC-250U	2-1/2"	63.00	63.60	70.20	70.80	200	10
MFC-300U	3"	78.00	78.70	85.20	85.90	225	10
MFC-400U	4"	101.60	102.60	108.50	109.50	275	10
MFC-500U	5"	125.00	127.00	135.00	137.00	300	5
MFC-600U	6"	150.00	153.00	160.00	162.00	400	5

Notes:Length of roll can be made according to customers' requirements.



PVC Coated Flexible Steel Conduit

Material: PVC & Steel
Color: Black & grey

Working Temperature: - 10°C TO 80°C

Applications

- Public & Commercial buildings
- Used as mechanical protection for insulated electrical cables and wires that are functional in normal atmospheric temperature
- Under floor applications for computer/floor boxes
- Used for connecting machines to controls
- Elevators, Metro Stations, CCTV Camera etc.



Features

- High mechanical strength.
- Low smoke density
- Black / Grey PVC Also available in LFHSUV resistant

CATALOG NUM BER	TRADE SIZE	INSIDE DIAM ETER		OUTSIDE DIAM ETER		BENDING	LENGTH
		M IN(M M)	M AX(M M)	M IN(M M)	M AX(M M)	RADIUS	M /ROLL
PFC-025	1/4"	9.70	10.40	14.40	14.70	45	100
PFC-038	3/8"	12.30	12.80	16.70	17.20	50	100
PFC-050	1/2"	15.80	16.30	20.20	20.70	65	30
PFC-075	3/4"	20.70	21.20	25.50	26.10	75	30
PFC-100	1"	26.00	26.60	31.60	32.20	100	30
PFC-125	1-1/4"	34.70	35.40	40.80	41.50	125	25
PFC-150	1-1/2"	40.00	40.60	46.60	47.20	150	25
PFC-200	2"	51.30	51.90	58.10	58.70	175	25
PFC-250	2-1/2"	63.00	63.60	71.80	72.40	200	10
PFC-300	3"	78.00	78.70	87.20	87.90	225	10
PFC-400	4"	101.60	102.60	111.20	112.30	275	10
PFC-500	5"	125.00	127.00	137.00	139.50	300	5
PFC-600	6"	150.00	153.00	162.00	165.00	400	5

Notes:Length of roll can be made according to customers' requirements.



Liquid Tight Flexible Steel Conduit

Material: PVC & Steel
Color: Black & grey

Structure: Square lock or interlock
Working Temperature: - 20°C- 120°C

Applications

- Used as mechanical protection for insulated electrical cables and wires that are functional in normal atmospheric temperature.
- Under floor applications for computer/floor boxes.
- Used for connecting machines to controls
- Elevators, Metro Stations, CCTV Camera etc.




Features

- High mechanical strength.
- IP rating: IP64 & IP65
- Inherent low fire hazard product.
- Produced as per UL standards and Conforming to UL 360

CATALOG NUM BER	TRADE SIZE	INSIDE DIAM ETER		OUTSIDE DIAM ETER		BENDING	LENGTH
		M IN(M M)	M AX(M M)	M IN(M M)	M AX(M M)	RADIUS	M /ROLL
LTFC-025U	1/4"	6.20	6.70	11.40	11.90	35	100
LTFC-038U	3/8"	12.30	12.80	17.50	18.00	60	100
LTFC-050U	1/2"	15.80	16.30	20.80	21.30	85	30
LTFC-075U	3/4"	20.70	21.20	26.30	26.70	100	30
LTFC-100U	1"	26.20	26.80	32.70	33.40	150	30
LTFC-125U	1-1/4"	34.80	35.40	41.40	42.20	180	15
LTFC-150U	1-1/2"	40.10	40.60	47.40	48.30	220	15
LTFC-200U	2"	51.30	51.90	59.40	60.30	250	15
LTFC-250U	2-1/2"	63.00	63.60	72.10	73.00	300	10
LTFC-300U	3"	78.00	78.70	87.90	88.90	450	10
LTFC-400U	4"	101.60	102.60	113.20	114.30	600	10

Notes:Length of roll can be made according to customers' requirements.





Zinc EMT Connector Set Screw
Zinc EMT Coupling Set Screw
Zinc EMT Connector Compression
Zinc EMT Coupling Compression
Steel EMT Connector Set Screw
Steel EMT Coupling Set Screw
Steel EMT Connector Compression
Steel EMT Coupling Compression
90 Degree Pull Elbow EMT to Box Set Screw
90 Degree Pull Elbow EMT to EMT Set Screw
EMT Offset Connector Set Screw Type
EMT Offset Connector Compression Type
90 Degree EMT Connector Set Screw Type
90 Degree EMT Connector Compression Type

EMT Fittings

Zinc EMT Connectors Set Screw Type

Material: Zinc die cast

Type: Set screw

Surface Finish: Polishing

Applications

Zinc EMT Connector Set Screw Type is a type of fitting used in electrical installations to connect electrical metallic tubing (EMT) to a box or enclosure



CATALOG NUMBER	TRADE SIZE
SSEN-050	1/2"
SSEN-075	3/4"
SSEN-100	1"
SSEN-125	1-1/4"
SSEN-150	1-1/2"
SSEN-200	2"
SSEN-250	2-1/2"
SSEN-300	3"
SSEN-400	4"

Zinc EMT Couplings Set Screw Type

Material: Zinc die cast

Type: Set screw

Surface Finish: Polishing

Applications

Zinc EMT Coupling Set Screw Type is a specific type of electrical fitting used to join two sections of Electrical Metallic Tubing (EMT) together in a straight line



CATALOG NUMBER	TRADE SIZE
SSEP-050	1/2"
SSEP-075	3/4"
SSEP-100	1"
SSEP-125	1-1/4"
SSEP-150	1-1/2"
SSEP-200	2"
SSEP-250	2-1/2"
SSEP-300	3"
SSEP-400	4"



Zinc EMT Connector Compression Type

Material: Zinc die cast

Type: Compression

Surface Finish: Polishing

Applications

Zinc EMT Connector Compression Type is a highly reliable fitting used to securely connect EMT to electrical boxes or enclosures.



CATALOG NUMBER	TRADE SIZE
CEN-050	1/2"
CEN-075	3/4"
CEN-100	1"
CEN-125	1-1/4"
CEN-150	1-1/2"
CEN-200	2"
CEN-250	2-1/2"
CEN-300	3"
CEN-400	4"

Zinc EMT Coupling Compression Type

Material: Zinc die cast

Type: Compression

Surface Finish: Polishing

Applications

Zinc EMT Coupling Compression Type is a specialized fitting used to connect two sections of Electrical Metallic Tubing (EMT) together, ensuring a secure and durable linkage.



CATALOG NUMBER	TRADE SIZE
CEP-050	1/2"
CEP-075	3/4"
CEP-100	1"
CEP-125	1-1/4"
CEP-150	1-1/2"
CEP-200	2"
CEP-250	2-1/2"
CEP-300	3"
CEP-400	4"



Steel EMT Connector Set Screw Type

Material: Steel
Type: Set screw
Surface Finish: Zinc plated

Applications

Steel EMT Connector Set Screw Type is a commonly used fitting in electrical installations, designed to connect Electrical Metallic Tubing(EMT) to electric boxes, panels or other enclosures



CATALOG NUMBER	TRADE SIZE
SSEN-050S	1/2"
SSEN-075S	3/4"
SSEN-100S	1"
SSEN-125S	1-1/4"
SSEN-150S	1-1/2"
SSEN-200S	2"
SSEN-250S	2-1/2"
SSEN-300S	3"
SSEN-350S	3-1/2"
SSEN-400S	4"

Steel EMT Connector Set Screw Type with Insulated Throat

Material: Steel
Type: Set screw & insulated
Surface Finish: Zinc plated

Applications

Steel EMT Connector Set Screw Type with Insulated Throat is a specialized fitting used in electrical installations to connect Electrical Metallic Tubing (EMT) to junction boxes, enclosures, or other electrical fixtures.



CATALOG NUMBER	TRADE SIZE
SSEN-050SI	1/2"
SSEN-075SI	3/4"
SSEN-100SI	1"
SSEN-125SI	1-1/4"
SSEN-150SI	1-1/2"
SSEN-200SI	2"
SSEN-250SI	2-1/2"
SSEN-300SI	3"
SSEN-350SI	3-1/2"
SSEN-400SI	4"



Steel EMT Coupling Set Screw Type

Material: Steel
Type: Set screw
Surface Finish: Zinc plated

Applications

Steel EMT Coupling Set Screw Type is a fundamental component used in electrical installations to connect two lengths of Electrical Metallic Tubing (EMT).



CATALOG NUMBER	TRADE SIZE
SSEP-050S	1/2"
SSEP-075S	3/4"
SSEP-100S	1"
SSEP-125S	1-1/4"
SSEP-150S	1-1/2"
SSEP-200S	2"
SSEP-250S	2-1/2"
SSEP-300S	3"
SSEP-350S	3-1/2"
SSEP-400S	4"

Steel EMT Connector Compression Type

Material: Steel
Type: Compression
Surface Finish: Zinc plated

Applications

Steel EMT Connector Compression Type is a specialized fitting used in electrical installations to connect Electrical Metallic Tubing (EMT) to electrical boxes, panels, or other enclosures.



CATALOG NUM BER	TRADE SIZE
CEN-050S	1/2"
CEN-075S	3/4"
CEN-100S	1"
CEN-125S	1-1/4"
CEN-150S	1-1/2"
CEN-200S	2"
CEN-250S	2-1/2"
CEN-300S	3"
CEN-350S	3-1/2"
CEN-400S	4"

Steel EMT Connector Compression Type with Insulated Throat

Material: Steel
Type: Compression
Surface Finish: Zinc plated

Applications

Steel EMT Connector Compression Type with Insulated Throat is a specialized electrical fitting designed to connect Electrical Metallic Tubing (EMT) to boxes, enclosures, or other electrical equipment.



CATALOG NUMBER	TRADE SIZE
CEN-050SI	1/2"
CEN-075SI	3/4"
CEN-100SI	1"
CEN-125SI	1-1/4"
CEN-150SI	1-1/2"
CEN-200SI	2"
CEN-250SI	2-1/2"
CEN-300SI	3"
CEN-350SI	3-1/2"
CEN-400SI	4"

Steel EMT Coupling Compression Type

Material: Zinc
Type: Compression
Surface Finish: Zinc plated

Applications

Steel EMT Coupling Compression Type is an essential fitting used in electrical installations to securely connect two lengths of Electrical Metallic Tubing (EMT).



CATALOG NUMBER	TRADE SIZE
CEP-050S	1/2"
CEP-075S	3/4"
CEP-100S	1"
CEP-125S	1-1/4"
CEP-150S	1-1/2"
CEP-200S	2"
CEP-250S	2-1/2"
CEP-300S	3"
CEP-350S	3-1/2"
CEP-400S	4"



Steel Raintight EMT Connector Compression Type

Material: Steel
Type: Compression
Surface Finish: Zinc plated

Applications

Steel raintight EMT connector of the compression type is used in various applications where it is essential to protect electrical wiring from moisture and environmental elements.



CATALOG NUMBER	TRADE SIZE
CEN-050SR	1/2"
CEN-075SR	3/4"
CEN-100SR	1"
CEN-125SR	1-1/4"
CEN-150SR	1-1/2"
CEN-200SR	2"
CEN-250SR	2-1/2"
CEN-300SR	3"
CEN-350SR	3-1/2"
CEN-400SR	4"

Steel Raintight EMT Connector Compression Type with Insulated Throat

Material: Steel
Type: Compression
Surface Finish: Zinc plated

Applications

Steel raintight EMT connector with a compression type and insulated throat is a specialized electrical fitting used to connect EMT conduit to electrical boxes or enclosures.



CATALOG NUMBER	TRADE SIZE
CEN-050SRI	1/2"
CEN-075SRI	3/4"
CEN-100SRI	1"
CEN-125SRI	1-1/4"
CEN-150SRI	1-1/2"
CEN-200SRI	2"
CEN-250SRI	2-1/2"
CEN-300SRI	3"
CEN-350SRI	3-1/2"
CEN-400SRI	4"



Steel Raintight EMT Coupling Compression Type

Material: Steel
Type: Compression
Surface Finish: Zinc plated

Applications

Steel raintight EMT (Electrical Metallic Tubing) coupling of the compression type is a crucial component in electrical installations, particularly in environments where exposure to moisture is a concern.



CATALOG NUMBER	TRADE SIZE
CEP-050SR	1/2"
CEP-075SR	3/4"
CEP-100SR	1"
CEP-125SR	1-1/4"
CEP-150SR	1-1/2"
CEP-200SR	2"
CEP-250SR	2-1/2"
CEP-300SR	3"
CEP-350SR	3-1/2"
CEP-400SR	4"

90 Degree EMT Corner Coupling Set Screw Type

Material: Zinc die cast
Type: Set screw
Surface Finish: Polishing

Applications

90-degree EMT corner coupling with a set screw type is a specialized conduit fitting designed to connect two sections of Electrical Metallic Tubing (EMT) at a right angle.



CATALOG NUMBER	TRADE SIZE
ETE-050	1/2"
ETE-075	3/4"
ETE-100	1"



Zinc EMT Offset Connector Set Screw Type

Material: Zinc die cast

Type: Set screw

Surface Finish: Polishing

Applications

EMT Offset Connector with a set screw type is a specialized fitting used in electrical installations to connect Electrical Metallic Tubing (EMT) to a junction box, enclosure, or other electrical equipment.

CATALOG NUMBER	TRADE SIZE
SSOC-050	1/2"
SSOC-075	3/4"
SSOC-100	1"



Zinc EMT Offset Connector Compression Type

Material: Zinc die cast

Type: Compression

Surface Finish: Polishing

Applications

EMT Offset Connector with a compression type is another essential fitting used in electrical installations, specifically designed to connect Electrical Metallic Tubing (EMT) to a junction box, enclosure, or other electrical equipment when alignment adjustments are necessary.

CATALOG NUMBER	TRADE SIZE
CENOC-050	1/2"
CENOC-075	3/4"
CENOC-100	1"



Zinc 90 Degree Pull Elbow EMT to Box Set Screw Type

Material: Zinc die cast

Type: Set screw type

Surface Finish: Polishing

Applications

90-degree pull elbow EMT to box set screw type fitting is an essential component used in electrical conduit systems. It allows for a 90-degree bend in the conduit run while connecting EMT (Electrical Metallic Tubing) to an electrical box or enclosure.



CATALOG NUMBER	TRADE SIZE
ESE-050	1/2"
ESE-075	3/4"
ESE-100	1"
ESE-125	1-1/4"

Zinc 90 Degree Pull Elbow EMT to EMT Set Screw Type

Material: Zinc die cast

Type: Set screw type

Surface Finish: Polishing

Applications

90-degree pull elbow EMT to EMT set screw type fitting is designed to connect two sections of Electrical Metallic Tubing (EMT) at a 90-degree angle. This type of fitting is essential for creating sharp turns in conduit runs while maintaining accessibility for wire pulling and maintenance.



CATALOG NUMBER	TRADE SIZE
ETE-050	1/2"
ETE-075	3/4"
ETE-100	1"
ETE-125	1-1/4"



Zinc 90 Degree EMT Connector Set Screw Type

Material: Zinc die cast

Type: Set screw

Surface Finish: Polishing

Applications

90-degree EMT connector with a set screw type is a specialized conduit fitting used to connect Electrical Metallic Tubing (EMT) to a box, enclosure, or other conduit at a right angle

CATALOG NUMBER	TRADE SIZE
SSEN90-050	1/2"
SSEN90-075	3/4"
SSEN90-100	1"



Zinc 90 Degree EMT Connector Compression Type

Material: Zinc die cast

Type: Compression

Surface Finish: Polishing

Applications

90-degree EMT connector with a compression type is a conduit fitting designed to connect Electrical Metallic Tubing (EMT) to a box, enclosure, or another conduit at a right angle using a compression mechanism.

CATALOG NUMBER	TRADE SIZE
CEN90-050	1/2"
CEN90-075	3/4"
CEN90-100	1"



Steel EMT to Rigid Combination Coupling
Compression / Thread Type

Material: Steel
Type: Combination
Surface Finish: Zinc plated

Applications

An EMT to Rigid Combination Coupling with Compression/Thread Type is a specialized conduit fitting designed to connect Electrical Metallic Tubing(EMT) to Rigid Metal Conduit (RMC) or Intermediate Metal Conduit (IMC).



CATALOG NUMBER	TRADE SIZE
ETRCEP-050	1/2"
ETRCEP-075	3/4"
ETRCEP-100	1"

Steel EMT to Rigid Combination Coupling
Set Screw Type

Material: Steel
Type: Set screw
Surface Finish: Zinc plated

Applications

EMT to Rigid Combination Coupling with a Set Screw Type is a conduit fitting designed to join Electrical Metallic Tubing (EMT) to Rigid Metal Conduit (RMC) or Intermediate Metal Conduit (IMC) using a set screw mechanism on the EMT side and threads on the rigid side.



CATALOG NUMBER	TRADE SIZE
ETRSSEP-050	1/2"
ETRSSEP-075	3/4"
ETRSSEP-100	1"





Rigid Connector
Rigid Coupling
IMC Coupling
Rigid Offset Nipple
Zinc Pull Elbow
Rigid Watertight Hub
Rigid Watertight Hub with Bonding Screw
Rigid Coupling Three Piece Type
Rigid Conduit Nipple
Reducing Bushing
PVC Rigid Conduit Bushing
Rigid Conduit Bushing
Insulated Rigid Conduit Bushing
Insulated Rigid Conduit Bushing with Aluminum Lug
Zinc Rigid Locknut
Steel Rigid Locknut
Steel Sealing Locknut with Plastic seal
Steel Grounding Locknuts
Concrete Slab Insert

IMC and Rigid Fittings

Steel Rigid Connector Set Screw Type

Material: Steel
Type: Set screw
Surface Finish: Zinc plated

Applications

Steel Rigid Connector with a Set Screw Type is a conduit fitting designed to connect sections of Rigid Metal Conduit (RMC) or Intermediate Metal Conduit (IMC) using a set screw mechanism.



CATALOG NUM BER	TRADE SIZE
SSRN-050S	1/2"
SSRN-075S	3/4"
SSRN-100S	1"
SSRN-125S	1-1/4"
SSRN-150S	1-1/2"
SSRN-200S	2"
SSRN-250S	2-1/2"
SSRN-300S	3"
SSRN-350S	3-1/2"
SSRN-400S	4"

Steel Rigid Coupling Set Screw Type

Material: Steel
Type: Set screw
Surface Finish: Zinc plated

Applications

Steel Rigid Coupling with Set Screw Type is a specific type of conduit fitting designed to join two lengths of Rigid Metal Conduit (RMC) or Intermediate Metal Conduit (IMC).



CATALOG NUM BER	TRADE SIZE
SSRP-050S	1/2"
SSRP-075S	3/4"
SSRP-100S	1"
SSRP-125S	1-1/4"
SSRP-150S	1-1/2"
SSRP-200S	2"
SSRP-250S	2-1/2"
SSRP-300S	3"
SSRP-350S	3-1/2"
SSRP-400S	4"



Steel Rigid Connector Compression Type

Material: Steel
Type: Compression
Surface Finish: Zinc plated

Applications

Steel Rigid Connector with Compression Type is a conduit fitting designed to join sections of Rigid Metal Conduit (RMC) or Intermediate Metal Conduit (IMC) using a compression mechanism



CATALOG NUM BER	TRADE SIZE
CRN-050S	1/2"
CRN-075S	3/4"
CRN-100S	1"
CRN-125S	1-1/4"
CRN-150S	1-1/2"
CRN-200S	2"
CRN-250S	2-1/2"
CRN-300S	3"
CRN-350S	3-1/2"
CRN-400S	4"

Steel Rigid Coupling Compression Type

Material: Steel
Type: Compression
Surface Finish: Zinc plated

Applications

Steel Rigid Coupling with Compression Type is a specialized conduit fitting used to connect two lengths of Rigid Metal Conduit (RMC) or Intermediate Metal Conduit (IMC).



CATALOG NUM BER	TRADE SIZE
CRP-050S	1/2"
CRP-075S	3/4"
CRP-100S	1"
CRP-125S	1-1/4"
CRP-150S	1-1/2"
CRP-200S	2"
CRP-250S	2-1/2"
CRP-300S	3"
CRP-350S	3-1/2"
CRP-400S	4"



Malleable Iron Rigid Connector Set Screw Type

Material: Malleable iron

Type: Set screw

Surface Finish: Zinc plated or Hot dipped galvanized

Applications

Malleable Iron Rigid Connector with Set Screw Type is a conduit fitting designed to connect sections of Rigid Metal Conduit (RMC) or Intermediate Metal Conduit (IMC).



CATALOG NUM BER	TRADE SIZE
SSRN-050	1/2"
SSRN-075	3/4"
SSRN-100	1"
SSRN-125	1-1/4"
SSRN-150	1-1/2"
SSRN-200	2"
SSRN-500	5"
SSRN-600	6"

Malleable Iron Rigid Coupling Set Screw Type

Material: Malleable iron

Type: Set screw

Surface Finish: Zinc plated or Hot dipped galvanized

Applications

Malleable Iron Rigid Coupling with Set Screw Type is a conduit fitting specifically designed to connect two lengths of Rigid Metal Conduit (RMC) or Intermediate Metal Conduit (IMC).



CATALOG NUM BER	TRADE SIZE
SSRP-050	1/2"
SSRP-075	3/4"
SSRP-100	1"
SSRP-125	1-1/4"
SSRP-150	1-1/2"
SSRP-200	2"
SSRP-500	5"
SSRP-600	6"



Malleable Iron Rigid Connector Compression Type

Material: Malleable iron
Type: Compression
Surface Finish: Zinc plated or Hot dipped galvanized

Applications

Malleable Iron Rigid Connector with Compression Type is a conduit fitting designed to connect sections of Rigid Metal Conduit (RMC) or Intermediate Metal Conduit (IMC) using a compression mechanism.



CATALOG NUM BER	TRADE SIZE
CRN-050MI	1/2"
CRN-075MI	3/4"
CRN-100MI	1"
CRN-125MI	1-1/4"
CRN-150MI	1-1/2"
CRN-200MI	2"
CRN-250MI	2-1/2"
CRN-300MI	3"
CRN-350MI	3-1/2"
CRN-400MI	4"

Malleable Iron Rigid Coupling Compression Type

Material: Malleable iron
Type: Compression
Surface Finish: Zinc plated or Hot dipped galvanized

Applications

Malleable Iron Rigid Coupling with Compression Type is a specialized fitting used to connect two lengths of Rigid Metal Conduit (RMC) or Intermediate Metal Conduit (IMC).



CATALOG NUM BER	TRADE SIZE
CRP-050MI	1/2"
CRP-075MI	3/4"
CRP-100MI	1"
CRP-125MI	1-1/4"
CRP-150MI	1-1/2"
CRP-200MI	2"
CRP-250MI	2-1/2"
CRP-300MI	3"
CRP-350MI	3-1/2"
CRP-400MI	4"



Steel IMC Coupling

Material: Steel
Type: Thread
Surface Finish: Zinc plated or Hot dipped galvanized

Applications

Steel IMC (Intermediate Metal Conduit) Coupling is a conduit fitting designed to connect two lengths of Intermediate Metal Conduit, ensuring a secure and continuous path for electrical wiring.



CATALOG NUM BER	TRADE SIZE
ICP-050	1/2"
ICP-075	3/4"
ICP-100	1"
ICP-125	1-1/4"
ICP-150	1-1/2"
ICP-200	2"
ICP-250	2-1/2"
ICP-300	3"
ICP-350	3-1/2"
ICP-400	4"

Steel Rigid Coupling

Material: Steel
Type: Thread
Surface Finish: Zinc plated or Hot dipped galvanized

Applications

Steel Rigid Coupling is a type of conduit fitting specifically designed to join two lengths of Rigid Metal Conduit (RMC).



CATALOG NUM BER	TRADE SIZE
RCP-050	1/2"
RCP-075	3/4"
RCP-100	1"
RCP-125	1-1/4"
RCP-150	1-1/2"
RCP-200	2"
RCP-250	2-1/2"
RCP-300	3"
RCP-350	3-1/2"
RCP-400	4"
RCP-500	5"
RCP-600	6"

Zinc Rigid Offset Nipple

Material: Zinc die cast
Type: Offset
Surface Finish: Polishing

Applications

Zinc Rigid Offset Nipple is a specialized conduit fitting used to connect two rigid metal conduits (RMC) or intermediate metal conduits (IMC) at an offset angle.



CATALOG NUM BER	TRADE SIZE
OFP-050	1/2"
OFP-075	3/4"
OFP-100	1"
OFP-125	1-1/4"
OFP-150	1-1/2"
OFP-200	2"

Malleable Iron Rigid Offset Nipple

Material: Malleable iron
Type: Offset
Surface Finish: Zinc plated or Hot dipped galvanized

Applications

Malleable Iron Rigid Offset Nipple is a specialized conduit fitting used to connect two rigid metal conduits (RMC) or intermediate metal conduits (IMC) at an offset.



CATALOG NUM BER	TRADE SIZE
MOFP-050	1/2"
MOFP-075	3/4"
MOFP-100	1"
MOFP-125	1-1/4"



Malleable Iron Pull Elbow Rigid To Box 90 Degree Type

Material: Malleable iron

Type: 90 degree

Surface Finish: Zinc plated or Hot dipped galvanized

Applications

Malleable Iron Pull Elbow Rigid to Box 90 Degree Type is a robust conduit fitting designed to connect a rigid metal conduit (RMC) to an electrical box at a 90-degree angle.



CATALOG NUM BER	TRADE SIZE
RSE-050	1/2"
RSE-075	3/4"
RSE-100	1"
RSE-125	1-1/4"
RSE-150	1-1/2"
RSE-200	2"

Malleable Iron Pull Elbow Rigid To Rigid 90 Degree Type

Material: Malleable iron

Type: 90 degree

Surface Finish: Zinc plated or Hot dipped galvanized

Applications

Malleable Iron Pull Elbow Rigid to Rigid 90 Degree Type is a specialized conduit fitting designed to connect two sections of rigid metal conduit (RMC) at a 90-degree angle.



CATALOG NUM BER	TRADE SIZE
RTE-050	1/2"
RTE-075	3/4"
RTE-100	1"
RTE-125	1-1/4"
RTE-150	1-1/2"
RTE-200	2"



Zinc Rigid Watertight Hub

Material: Zinc die cast
Type: Watertight
Surface Finish: Polishing

Applications

Zinc Rigid Watertight Hub is a specialized conduit fitting designed to provide a secure, watertight connection between rigid metal conduit(RMC) and an electrical box or enclosure.



CATALOG NUM BER	TRADE SIZE
RWH-050	1/2"
RWH-075	3/4"
RWH-100	1"
RWH-125	1-1/4"
RWH-150	1-1/2"
RWH-200	2"
RWH-250	2-1/2"
RWH-300	3"
RWH-400	4"

Zinc Rigid Watertight Hub with Bonding Screw

Material: Zinc die cast
Type: Watertight with bonding screw
Surface Finish: Polishing

Applications

Zinc Rigid Watertight Hub with a Bonding Screw is a specialized conduit fitting designed to securely connect rigid metal conduit (RMC) to an electrical box or enclosure while ensuring a watertight seal and providing a reliable electrical bonding.



CATALOG NUM BER	TRADE SIZE
RWBH-050	1/2"
RWBH-075	3/4"
RWBH-100	1"
RWBH-125	1-1/4"
RWBH-150	1-1/2"
RWBH-200	2"
RWBH-250	2-1/2"
RWBH-300	3"
RWBH-400	4"



Malleable Iron Rigid Watertight Hub

Material: Malleable iron
Type: Watertight
Surface Finish: Zinc plated or Hot dipped galvanized

Applications

Malleable Iron Rigid Watertight Hub is a conduit fitting designed to securely and safely connect rigid metal conduit (RMC) or intermediate metal conduit (IMC) to enclosures such as junction boxes, electrical panels, or other types of enclosures, ensuring a watertight seal



CATALOG NUM BER	TRADE SIZE
MRWH-050	1/2"
MRWH-075	3/4"
MRWH-100	1"
MRWH-125	1-1/4"
MRWH-150	1-1/2"
MRWH-200	2"
MRWH-250	2-1/2"
MRWH-300	3"
MRWH-400	4"
MRWH-500	5"
MRWH-600	6"

Malleable Iron Rigid Coupling Slip-on Type

Material: Malleable iron
Type: Slip-on
Surface Finish: Zinc plated or Hot dipped galvanized

Applications

Malleable Iron Rigid Coupling Slip-on Type is a specific type of conduit fitting designed to join two lengths of rigid metal conduit (RMC). These couplings are made from malleable iron, which provides durability and some flexibility to withstand mechanical stress.



CATALOG NUM BER	TRADE SIZE
RCPS-050	1/2"
RCPS-075	3/4"
RCPS-100	1"
RCPS-125	1-1/4"
RCPS-150	1-1/2"
RCPS-200	2"
RCPS-250	2-1/2"
RCPS-300	3"
RCPS-350	3-1/2"
RCPS-400	4"
RCPS-500	5"
RCPS-600	6"



Steel Rigid Coupling Three Piece Type

Material: Steel
Type: Three piece
Surface Finish: Zinc plated

Applications

Steel Rigid Coupling Three Piece Type is a specific type of coupling used in the electrical and mechanical industries to connect two sections of rigid conduit.



CATALOG NUM BER	TRADE SIZE
RCTS-050	1/2"
RCTS-075	3/4"
RCTS-100	1"
RCTS-125	1-1/4"
RCTS-150	1-1/2"
RCTS-200	2"

Malleable Iron Rigid Coupling Three Piece Type

Material: Malleable iron
Type: Three piece
Surface Finish: Zinc plated or Hot dipped galvanized

Applications

Malleable Iron Rigid Coupling Three Piece Type is a robust conduit fitting designed to connect two sections of rigid metal conduit (RMC) or intermediate metal conduit (IMC).



CATALOG NUM BER	TRADE SIZE
RCTMI-050	1/2"
RCTMI-075	3/4"
RCTMI-100	1"
RCTMI-125	1-1/4"
RCTMI-150	1-1/2"
RCTMI-200	2"
RCTMI-250	2-1/2"
RCTMI-300	3"
RCTMI-350	3-1/2"
RCTMI-400	4"
RCTMI-500	5"
RCTMI-600	6"



Zinc Rigid Conduit Nipple

Material: Zinc die cast
Type: Male
Surface Finish: Polishing

Applications

Zinc Rigid Conduit Nipple is a short piece of conduit used to connect two fittings or enclosures in electrical installations where rigid metal conduit (RMC) is used.



CATALOG NUM BER	TRADE SIZE
RCNZ-50	1/2"
RCNZ-075	3/4"
RCNZ-100	1"
RCNZ-125	1-1/4"
RCNZ-150	1-1/2"
RCNZ-200	2"
RCNZ-250	2-1/2"
RCNZ-300	3"
RCNZ-350	3-1/2"
RCNZ-400	4"

Malleable Iron Rigid Conduit Nipple

Material: Malleable iron
Type: Male
Surface Finish: Zinc plated

Applications

Malleable Iron Rigid Conduit Nipple is a short, robust piece of conduit used to connect two electrical fittings, boxes, or enclosures in rigid metal conduit (RMC) systems.



CATALOG NUM BER	TRADE SIZE
RCNMI-050	1/2"
RCNMI-075	3/4"
RCNMI-100	1"
RCNMI-125	1-1/4"
RCNMI-150	1-1/2"
RCNMI-200	2"
RCNMI-250	2-1/2"
RCNMI-300	3"
RCNMI-350	3-1/2"
RCNMI-400	4"



Steel Reducing Bushing

Material: Steel
Type: Reducing
Surface Finish: Zinc plated

Applications

Steel reducing bushing for Intermediate Metal Conduit (IMC) or Rigid Metal Conduit (RMC) is a specialized fitting used in electrical installations to connect conduits of different diameters.



CATALOG NUM BER	TRADE SIZE
REDG-1001	3/4"-1/2"
REDG-1002	1"-1/2"
REDG-1003	1"-3/4"
REDG-1004	1-1/4"-1/2"
REDG-1005	1-1/4"-3/4"
REDG-1006	1-1/4"-1"
REDG-1007	1-1/2"-1/2"
REDG-1008	1-1/2"-3/4"
REDG-1009	1-1/2"-1"
REDG-1010	1-1/2"-1-1/4"
REDG-1011	2"-1/2"
REDG-1012	2"-3/4"
REDG-1013	2"-1"
REDG-1014	2"-1-1/4"
REDG-1015	2"-1-1/2"

Malleable Iron Reducing Bushing

Material: Malleable iron
Type: Reducing
Surface Finish: Zinc plated

Applications

Malleable iron reducing bushing for Intermediate Metal Conduit (IMC) or Rigid Metal Conduit (RMC) is a crucial fitting used to connect conduits of differing sizes in electrical installations.



CATALOG NUM BER	TRADE SIZE
REDGMI-1001	3/4"-1/2"
REDGMI-1002	1"-1/2"
REDGMI-1003	1"-3/4"
REDGMI-1004	1-1/4"-1/2"
REDGMI-1005	1-1/4"-3/4"
REDGMI-1006	1-1/4"-1"
REDGMI-1007	1-1/2"-1/2"
REDGMI-1008	1-1/2"-3/4"
REDGMI-1009	1-1/2"-1"
REDGMI-1010	1-1/2"-1-1/4"
REDGMI-1011	2"-1/2"
REDGMI-1012	2"-3/4"
REDGMI-1013	2"-1"
REDGMI-1014	2"-1-1/4"
REDGMI-1015	2"-1-1/2"



Plastic Rigid Conduit Bushing

Material: Thermoplastic

Type: Thread

Applications

Plastic rigid conduit bushings are essential components used in electrical installations where non-metallic or plastic conduit systems are employed.



CATALOG NUM BER	TRADE SIZE
IPB-050	1/2"
IPB-075	3/4"
IPB-100	1"
IPB-125	1-1/4"
IPB-150	1-1/2"
IPB-200	2"
IPB-250	2-1/2"
IPB-300	3"
IPB-350	3-1/2"
IPB-400	4"

Zinc Rigid Conduit Bushing

Material: Zinc die cast

Type: Thread

Surface Finish: Polishing

Applications

Zinc rigid conduit bushings are critical components in electrical installations, particularly when using metal conduit systems such as Intermediate Metal Conduit (IMC) or Rigid Metal Conduit (RMC).



CATALOG NUM BER	TRADE SIZE
RCB-050	1/2"
RCB-075	3/4"
RCB-100	1"
RCB-125	1-1/4"
RCB-150	1-1/2"
RCB-200	2"
RCB-250	2-1/2"
RCB-300	3"
RCB-400	4"



Zinc Insulated Rigid Conduit Bushing

Material: Zinc die cast
Type: Insulated
Surface Finish: Polishing

Applications

Zinc insulated rigid conduit bushings are specialized fittings used in electrical systems where metal conduits, such as Intermediate Metal Conduit (IMC) or Rigid Metal Conduit (RMC), are utilized.



CATALOG NUM BER	TRADE SIZE
RCBI-050	1/2"
RCBI-075	3/4"
RCBI-100	1"
RCBI-125	1-1/4"
RCBI-150	1-1/2"
RCBI-200	2"
RCBI-250	2-1/2"
RCBI-300	3"
RCBI-400	4"

Zinc Insulated Rigid Conduit Bushing with Aluminum Lug

Material: Zinc die cast & Aluminum
Type: Insulated
Surface Finish: Polishing

Applications

Zinc insulated rigid conduit bushings with an aluminum lug are advanced components designed for use in electrical systems where metal conduits are employed. These bushings not only protect wires from the sharp edges of conduit ends but also include a grounding lug made of aluminum for enhanced grounding and bonding.



CATALOG NUM BER	TRADE SIZE	LUG SIZE
GRCB-050	1/2"	#14 - #4
GRCB-075	3/4"	#14 - #4
GRCB-100	1"	#14 - #4
GRCB-125	1-1/4"	#14 - #4
GRCB-125-1	1-1/4"	#14 - #1/0
GRCB-150	1-1/2"	#14 - #2
GRCB-150-1	1-1/2"	#14 - #1/0
GRCB-200	2"	#14 - #2
GRCB-200-1	2"	#14 - #1/0
GRCB-250	2-1/2"	#14 - #1/0
GRCB-300	3"	#14 - #1/0
GRCB-400	4"	#14 - #1/0



Malleable Iron Insulated Rigid Conduit Bushing

Material: Malleable iron
Type: Insulated
Surface Finish: Zinc plated or Dacromet

Applications

Malleable iron insulated rigid conduit bushings are robust components designed for use in electrical conduit systems, particularly with rigid metal conduit (RMC) and intermediate metal conduit (IMC).



CATALOG NUM BER	TRADE SIZE
RCBMI-050	1/2"
RCBMI-075	3/4"
RCBMI-100	1"
RCBMI-125	1-1/4"
RCBMI-150	1-1/2"
RCBMI-200	2"
RCBMI-250	2-1/2"
RCBMI-300	3"
RCBMI-350	3-1/2"
RCBMI-400	4"
RCBMI-500	5"
RCBMI-600	6"

Malleable Iron Insulated Rigid Conduit Bushing with Aluminum Lug

Material: Malleable iron & Aluminum
Type: Insulated
Surface Finish: Zinc plated or Dacromet

Applications

Malleable iron insulated rigid conduit bushings with aluminum lugs are high-quality components designed for securing and protecting electrical wiring systems that utilize rigid metal conduit (RMC) or intermediate metal conduit (IMC). These bushings are particularly valuable in environments where both physical durability and reliable grounding are critical.



CATALOG NUM BER	TRADE SIZE	LUG SIZE
GRCBMI-050	1/2"	#14 - #4
GRCBMI-075	3/4"	#14 - #4
GRCBMI-100	1"	#14 - #4
GRCBMI-125	1-1/4"	#14 - #4
GRCBMI-125-1	1-1/4"	#14 - #1/0
GRCBMI-150	1-1/2"	#14 - #4
GRCBMI-150-1	1-1/2"	#14 - #1/0
GRCBMI-200	2"	#14 - #4
GRCBMI-200-1	2"	#14 - #1/0
GRCBMI-250	2-1/2"	#6 - #250MCM
GRCBMI-250-1	2-1/2"	#14 - #1/0
GRCBMI-300	3"	#6 - #250MCM
GRCBMI-300-1	3"	#14 - #1/0
GRCBMI-350	3-1/2"	#6 - #250MCM
GRCBMI-350-1	3-1/2"	#14 - #1/0
GRCBMI-400	4"	#6 - #250MCM
GRCBMI-400-1	4"	#14 - #1/0
GRCBMI-500	5"	#6 - #250MCM
GRCBMI-600	6"	#6 - #250MCM



Zinc Rigid Locknut

Material: Zinc die cast

Surface Finish: Polishing

Applications

Zinc rigid locknuts are essential components used in electrical conduit systems to secure conduit fittings to electrical boxes or enclosures.



CATALOG NUM BER	TRADE SIZE
RZL-050	1/2"
RZL-075	3/4"
RZL-100	1"
RZL-125	1-1/4"
RZL-150	1-1/2"
RZL-200	2"
RZL-250	2-1/2"
RZL-300	3"
RZL-400	4"

Steel Rigid Locknut

Material: Steel

Surface Finish: Zinc plated

Applications

Steel rigid locknuts are fundamental components in electrical installations, particularly used to secure and stabilize rigid metal conduit (RMC) and intermediate metal conduit (IMC) fittings to electrical boxes, enclosures, or other fittings.



CATALOG NUM BER	TRADE SIZE
RSL-050	1/2"
RSL-075	3/4"
RSL-100	1"
RSL-125	1-1/4"
RSL-150	1-1/2"
RSL-200	2"
RSL-250	2-1/2"
RSL-300	3"
RSL-350	3-1/2"
RSL-400	4"
RSL-500	5"
RSL-600	6"



Steel Sealing Locknut with Plastic seal

Material: Steel
Type: Sealing
Surface Finish: Zinc plated

Applications

Steel sealing locknuts with plastic seals are specialized components used in electrical conduit systems to provide both a secure mechanical connection and a moisture-resistant seal.



CATALOG NUM BER	TRADE SIZE
RSLI-050	1/2"
RSLI-075	3/4"
RSLI-100	1"
RSLI-125	1-1/4"
RSLI-150	1-1/2"
RSLI-200	2"
RSLI-250	2-1/2"
RSLI-300	3"
RSLI-350	3-1/2"
RSLI-400	4"

Steel Grounding Locknuts

Material: Steel
Type: Grounding
Surface Finish: Zinc plated

Applications

Steel grounding locknuts are specialized components designed for use in electrical conduit systems to ensure a secure mechanical connection while also providing a reliable electrical grounding path.



CATALOG NUM BER	TRADE SIZE
GRSL-050	1/2"
GRSL-075	3/4"
GRSL-100	1"
GRSL-125	1-1/4"
GRSL-150	1-1/2"
GRSL-200	2"
GRSL-250	2-1/2"
GRSL-300	3"
GRSL-350	3-1/2"
GRSL-400	4"



Malleable Iron Concrete Slab Insert Straight Type

Material: Malleable iron
Type: Straight
Surface Finish: Zinc plated

Applications

Malleable iron concrete slab insert of the straight type is a specialized hardware component used in construction and electrical installations. It is designed to be embedded into concrete slabs, floors, or walls to provide a secure anchoring point for running electrical conduits or mechanical supports through concrete structures.



CATALOG NUM BER	TRADE SIZE
CSIMI-050	1/2"
CSIMI-075	3/4"
CSIMI-100	1"

Malleable Iron Concrete Slab Insert 90 Degree Type

Material: Malleable iron
Type: 90 degree
Surface Finish: Zinc plated

Applications

Malleable iron concrete slab insert of the 90-degree type is a specialized fitting designed for embedding in concrete structures to facilitate the routing of electrical conduits, plumbing, or other mechanical systems.



CATALOG NUM BER	TRADE SIZE
CSIMI-N-050	1/2"
CSIMI-N-075	3/4"
CSIMI-N-100	1"





Liquid Tight Connector Straight Type
Liquid Tight Connector 90 Degree Type
Liquid Tight Connector Straight Type with Lug
Liquid Tight Connector 45 Degree Type
Liquid Tight Connector 45 Degree Type With Lug
Liquid Tight Connector 90 Degree Type
Liquid Tight Connector 90 Degree Type with Lug
Steel Liquid Tight Connector Straight Type
Steel Rigid to Liquid Tight Coupling
Steel EMT to Liquid Tight Coupling
Steel Ferrule

Liquid Tight Fittings

Zinc Liquid Tight Connector Straight Type

Material: Zinc die cast
Type: Straight
Surface Finish: Polishing

Applications

Zinc Liquid Tight Conduit Connector Straight Type is an electrical fitting designed to provide a secure, watertight connection between liquid-tight conduit and electrical enclosures or equipment.



CATALOG NUM BER	TRADE SIZE
LTCS-038	3/8"
LTCS-050	1/2"
LTCS-075	3/4"
LTCS-100	1"
LTCS-125	1-1/4"
LTCS-150	1-1/2"
LTCS-200	2"
LTCS-250	2-1/2"
LTCS-300	3"
LTCS-400	4"

Zinc Liquid Tight Connector 90 Degree Type

Material: Zinc die cast
Type: 90 degree
Surface Finish: Polishing

Applications

Zinc Liquid Tight Conduit Connector 90 Degree Type is an electrical fitting designed to provide a secure, watertight connection between liquid-tight conduit and electrical enclosures or equipment, while allowing the conduit to turn at a right angle.



CATALOG NUM BER	TRADE SIZE
LTCA-038	3/8"
LTCA-050	1/2"
LTCA-075	3/4"
LTCA-100	1"
LTCA-125	1-1/4"
LTCA-150	1-1/2"
LTCA-200	2"
LTCA-250	2-1/2"
LTCA-300	3"
LTCA-400	4"



Malleable Iron Liquid Tight Connector Straight Type

Material: Malleable iron
Type: Straight
Surface Finish: Zinc plated

Applications

Malleable Iron Liquid Tight Conduit Connector Straight Type is an electrical fitting designed to provide a secure and watertight connection between liquid-tight conduit and electrical enclosures or equipment in a straight-line configuration.



CATALOG NUM BER	TRADE SIZE
LTCSM-038	3/8"
LTCSM-050	1/2"
LTCSM-075	3/4"
LTCSM-100	1"
LTCSM-125	1-1/4"
LTCSM-150	1-1/2"
LTCSM-200	2"
LTCSM-250	2-1/2"
LTCSM-300	3"
LTCSM-400	4"

Malleable Iron Liquid Tight Connector Straight Type with Aluminum Lug

Material: Malleable iron
Type: Straight
Surface Finish: Zinc plated

Applications

Malleable Iron Liquid Tight Conduit Connector Straight Type with Aluminum Lug is a type of electrical fitting designed to provide a secure, watertight connection between a liquid-tight conduit and an electrical enclosure or equipment.



CATALOG NUM BER	TRADE SIZE	LUG RANGE
GLTCSM-038	3/8"	#14 - #4
GLTCSM-050	1/2"	#14 - #4
GLTCSM-075	3/4"	#14 - #4
GLTCSM-100	1"	#14 - #4
GLTCSM-125	1-1/4"	#14 - #4
GLTCSM-150	1-1/2"	#14 - #4
GLTCSM-200	2"	#14 - #4
GLTCSM-250	2-1/2"	#14 - #1/0
GLTCSM-300	3"	#14 - #1/0
GLTCSM-400	4"	#6 - #250MCM



Malleable Iron Liquid Tight Connector 45 Degree Type

Material: Malleable iron

Type: 45 degree

Surface Finish: Zinc plated

Applications

Malleable Iron Liquid Tight Conduit Connector 45 Degree Type is an electrical fitting designed to provide a secure, watertight connection between a liquid-tight conduit and an electrical enclosure or equipment.



CATALOG NUM BER	TRADE SIZE
LTCBM-038	3/8"
LTCBM-050	1/2"
LTCBM-075	3/4"
LTCBM-100	1"
LTCBM-125	1-1/4"
LTCBM-150	1-1/2"
LTCBM-200	2"
LTCBM-250	2-1/2"
LTCBM-300	3"
LTCBM-400	4"

Malleable Iron Liquid Tight Connector 45 Degree Type with Aluminum Lug

Material: Malleable iron

Type: 45 degree

Surface Finish: Zinc plated

Applications

Malleable Iron Liquid Tight Conduit Connector 45 Degree Type with Aluminum Lug is a type of electrical fitting designed to provide a secure, watertight connection between a liquid-tight conduit and an electrical enclosure or equipment. Its 45-degree angle design allows for flexibility in routing conduits in tight spaces or around corners.



CATALOG NUM BER	TRADE SIZE	LUG RANGE
GLTCBM-038	3/8"	#14 - #4
GLTCBM-050	1/2"	#14 - #4
GLTCBM-075	3/4"	#14 - #4
GLTCBM-100	1"	#14 - #4
GLTCBM-125	1-1/4"	#14 - #4
GLTCBM-150	1-1/2"	#14 - #4
GLTCBM-200	2"	#14 - #4
GLTCBM-250	2-1/2"	#14 - #1/0
GLTCBM-300	3"	#14 - #1/0
GLTCBM-400	4"	#6 - #250MCM



Malleable Iron Liquid Tight Connector 90 Degree Type

Material: Malleable iron
Type: 90 degree
Surface Finish: Zinc plated

Applications

Malleable Iron Liquid Tight Conduit Connector 90 Degree Type is an electrical fitting designed to provide a secure, watertight connection between a liquid-tight conduit and an electrical enclosure or equipment.



CATALOG NUM BER	TRADE SIZE
LTCAM-038	3/8"
LTCAM-050	1/2"
LTCAM-075	3/4"
LTCAM-100	1"
LTCAM-125	1-1/4"
LTCAM-150	1-1/2"
LTCAM-200	2"
LTCAM-250	2-1/2"
LTCAM-300	3"
LTCAM-400	4"

Malleable Iron Liquid Tight Connector 90 Degree Type with Aluminum Lug

Material: Malleable iron
Type: 90 degree
Surface Finish: Zinc plated

Applications

Malleable Iron Liquid Tight Conduit Connector 90 Degree Type with Aluminum Lug is an electrical fitting designed to provide a secure, watertight connection between a liquid-tight conduit and an electrical enclosure or equipment.



CATALOG NUM BER	TRADE SIZE	LUG RANGE
GLTCAM-038	3/8"	#14 - #4
GLTCAM-050	1/2"	#14 - #4
GLTCAM-075	3/4"	#14 - #4
GLTCAM-100	1"	#14 - #4
GLTCAM-125	1-1/4"	#14 - #4
GLTCAM-150	1-1/2"	#14 - #4
GLTCAM-200	2"	#14 - #4
GLTCAM-250	2-1/2"	#14 - #1/0
GLTCAM-300	3"	#14 - #1/0
GLTCAM-400	4"	#6 - #250MCM



Non-metallic PVC Liquid Tight Connector Straight Type

Material: PVC
Type: Straight

Applications

Non-metallic PVC Liquid Tight Conduit Connector Straight Type is an electrical fitting designed to provide a secure, watertight connection between a liquid-tight non-metallic conduit and an electrical enclosure or equipment.



CATALOG NUM BER	TRADE SIZE
LTCSP-050	3/8"
LTCSP-050	1/2"
LTCSP-075	3/4"
LTCSP-100	1"
LTCSP-125	1-1/4"
LTCSP-150	1-1/2"
LTCSP-200	2"

Non-metallic PVC Liquid Tight Connector 90 Degree Type

Material: PVC
Type: 90 degree

Applications

Non-metallic PVC Liquid Tight Conduit Connector 90 Degree Type is an electrical fitting designed to provide a secure, watertight connection between a liquid-tight non-metallic conduit and an electrical enclosure or equipment. Its 90-degree angle design allows for flexibility in routing conduits around corners or in tight spaces, making it suitable for various electrical and industrial applications.



CATALOG NUM BER	TRADE SIZE
LTCAP-050	3/8"
LTCAP-050	1/2"
LTCAP-075	3/4"
LTCAP-100	1"
LTCAP-125	1-1/4"
LTCAP-150	1-1/2"
LTCAP-200	2"



Steel Liquid Tight Connector Straight Type

Material: Steel
Type: Straight
Surface Finish: Zinc plated

Applications

Steel Liquid Tight Flexible Conduit Connector Straight Type is an essential electrical fitting designed to securely connect a liquid-tight flexible steel conduit to an electrical enclosure or equipment.



CATALOG NUM BER	TRADE SIZE
LTCSS-050	1/2"
LTCSS-075	3/4"
LTCSS-100	1"
LTCSS-125	1-1/4"
LTCSS-150	1-1/2"
LTCSS-200	2"

Steel Rigid to Liquid Tight Coupling

Material: Steel
Type: Combination
Surface Finish: Zinc plated

Applications

Steel Rigid to Liquid Tight Flexible Conduit Coupling is a type of electrical fitting used to securely connect a rigid steel conduit to a liquid-tight flexible conduit.



CATALOG NUM BER	TRADE SIZE
RLTCP-050	1/2"
RLTCP-075	3/4"
RLTCP-100	1"
RLTCP-125	1-1/4"
RLTCP-150	1-1/2"
RLTCP-200	2"



Steel EMT to Liquid Tight Coupling

Material: Steel
Type: Combination
Surface Finish: Zinc plated

Applications

Steel EMT to Liquid Tight Flexible Conduit Coupling is an essential electrical fitting designed to securely connect EMT conduit to a liquid-tight flexible conduit.



CATALOG NUM BER	TRADE SIZE
ELTCP-050	1/2"
ELTCP-075	3/4"
ELTCP-100	1"

Steel Ferrule

Material: Steel
Surface Finish: Zinc plated

Applications

Steel Flexible Conduit Connector Ferrule is a specific type of fitting used to securely connect and terminate flexible steel conduits. This component is essential in providing a strong, reliable, and often watertight connection between flexible steel conduit and electrical boxes, panels, or other conduits.



CATALOG NUM BER	TRADE SIZE
SF-050	1/2"
SF-075	3/4"
SF-100	1"
SF-125	1-1/4"
SF-150	1-1/2"
SF-200	2"
SF-250	2-1/2"
SF-300	3"
SF-400	4"





Squeeze Flex Connector Straight Type
Squeeze Flex Connector 90 Degree Type
Flex Connector Clamp Type
Flex Connector Screw-In Type
Flex Coupling Screw-In Type
EMT to Flex Coupling Compression / Screw-In Type
EMT to Flex Coupling Set Screw / Squeeze Type
EMT to BX or NM Coupling Set Screw / Clamp Type
EMT to BX Coupling Set Screw Type
Rigid to Flex Coupling Thread / Squeeze Type
BX-Flex Connector Set Screw Type

Flexible Conduit Fittings

Zinc Squeeze Flex Connector Straight Type

Material: Zinc die cast
Type: Straight
Surface Finish: Polishing

Applications

Zinc Squeeze Flex Connector Straight Type is a specific kind of electrical fitting designed to connect flexible metal conduits (FMC) to electrical boxes, enclosures, or other conduit systems in a straight alignment.



CATALOG NUM BER	TRADE SIZE
BXFCS-038	3/8"
BXFCS-050	1/2"
BXFCS-075	3/4"
BXFCS-100	1"
BXFCS-125	1-1/4"
BXFCS-150	1-1/2"
BXFCS-200	2"
BXFCS-250	2-1/2"
BXFCS-300	3"
BXFCS-400	4"

Zinc Squeeze Flex Connector 90 Degree Type

Material: Zinc die cast
Type: 90 degree
Surface Finish: Polishing

Applications

Zinc Squeeze Flex Conduit Connector 90 Degree Type is a specific type of electrical fitting used to connect flexible metal conduits (FMC) to electrical boxes, enclosures, or other conduit systems at a 90-degree angle.



CATALOG NUM BER	TRADE SIZE
BXFCA-038	3/8"
BXFCA-050	1/2"
BXFCA-075	3/4"
BXFCA-100	1"
BXFCA-125	1-1/4"
BXFCA-150	1-1/2"
BXFCA-200	2"
BXFCA-250	2-1/2"
BXFCA-300	3"
BXFCA-400	4"



Malleable Iron Squeeze Flex Connector Straight Type

Material: Malleable iron
Type: Straight
Surface Finish: Zinc plated

Applications

Malleable Iron Squeeze Flex Conduit Connector Straight Type is a type of electrical fitting used to connect flexible metal conduits (FMC) to electrical boxes, enclosures, or other conduit systems in a straight alignment. Made from malleable iron, this connector offers durability and strength



CATALOG NUM BER	TRADE SIZE
MIBXFCS-038	3/8"
MIBXFCS-050	1/2"
MIBXFCS-075	3/4"
MIBXFCS-100	1"
MIBXFCS-125	1-1/4"
MIBXFCS-150	1-1/2"
MIBXFCS-200	2"
MIBXFCS-250	2-1/2"
MIBXFCS-300	3"
MIBXFCS-350	3-1/2"
MIBXFCS-400	4"

Malleable Iron Squeeze Flex Connector 90 Degree Type

Material: Malleable iron
Type: 90 degree
Surface Finish: Zinc plated

Applications

Malleable Iron Squeeze Flex Conduit Connector 90 Degree Type is a type of electrical fitting used to connect flexible metal conduits (FMC) to electrical boxes, enclosures, or other conduit systems at a right angle.



CATALOG NUM BER	TRADE SIZE
MIBXFCA-038	3/8"
MIBXFCA-050	1/2"
MIBXFCA-075	3/4"
MIBXFCA-100	1"
MIBXFCA-125	1-1/4"
MIBXFCA-150	1-1/2"
MIBXFCA-200	2"
MIBXFCA-250	2-1/2"
MIBXFCA-300	3"
MIBXFCA-350	3-1/2"
MIBXFCA-400	4"



Zinc Flex Connector Clamp Type

Material: Zinc die cast
Type: Clamp
Surface Finish: Polishing

Applications

Zinc Flex Connector Clamp Type is a specific type of fitting used primarily in electrical installations to secure and connect flexible metal conduit or armored cable to an electrical box or enclosure.



CATALOG NUM BER	TRADE SIZE
ETBX-050	1/2"
ETBX-075	3/4"
ETBX-100	1"

Zinc Flex Connector Screw-In Type

Material: Zinc die cast
Type: Screw-in
Surface Finish: Polishing

Applications

Zinc Flex Conduit Connector Screw-In Type is an electrical fitting designed to join flexible metal conduits (FMC) to electrical boxes, enclosures, or other conduit systems.



CATALOG NUM BER	TRADE SIZE
FLCNS-038	3/8"
FLCNS-050	1/2"
FLCNS-075	3/4"
FLCNS-100	1"
FLCNS-125	1-1/4"
FLCNS-150	1-1/2"
FLCNS-200	2"



Zinc Flex Coupling Screw-In Type

Material: Zinc die cast
Type: Screw-in
Surface Finish: Zinc plated

Applications

Zinc Flex Conduit Coupling Screw-In Type is an electrical fitting used to join two sections of flexible metal conduits (FMC) together, providing a secure and continuous conduit run.



CATALOG NUM BER	TRADE SIZE
FLCPS-050	1/2"
FLCPS-075	3/4"
FLCPS-100	1"
FLCPS-125	1-1/4"
FLCPS-150	1-1/2"
FLCPS-200	2"

Zinc EMT to Flex Coupling Compression / Screw-In Type

Material: Zinc die cast
Type: Combination
Surface Finish: Polishing

Applications

EMT (Electrical Metallic Tubing) to Flex Coupling Compression / Screw-In Type is an electrical fitting used to connect EMT conduit to flexible metal conduit (FMC).



CATALOG NUM BER	TRADE SIZE
FLCP-050	1/2"
FLCP-075	3/4"
FLCP-100	1"



Zinc EMT to Flex Coupling Set Screw / Squeeze Type

Material: Zinc die cast
Type: Combination
Surface Finish: Polishing

Applications

Zinc EMT to Flex Coupling Set Screw / Squeeze Type is an electrical fitting that is used to securely connect Electrical Metallic Tubing (EMT) to a flexible metal conduit (FMC).



CATALOG NUM BER	TRADE SIZE
ETFX-050	1/2"
ETFX-075	3/4"
ETFX-100	1"

Zinc EMT to BX or NM Coupling Set Screw / Clamp Type

Material: Zinc die cast
Type: Combination
Surface Finish: Polishing

Applications

Zinc EMT to BX or NM Coupling Set Screw / Clamp Type is an electrical fitting used to connect Electrical Metallic Tubing (EMT) to BX (Armored Cable) or NM (Non-Metallic Sheathed Cable).



CATALOG NUM BER	TRADE SIZE
ETBXSS-075	3/4"



Zinc EMT to BX Coupling Set Screw Type

Material: Zinc die cast
Type: Set screw
Surface Finish: Polishing

Applications

Zinc EMT to BX Coupling Set Screw Type is an electrical fitting that is used to connect Electrical Metallic Tubing (EMT) to BX (also known as Armored Cable or AC).



CATALOG NUM BER	TRADE SIZE
EBCP-075	3/4"

Malleable Iron Rigid to Flex Coupling Thread / Squeeze Type

Material: Malleable iron
Type: Combination
Surface Finish: Zinc plated

Applications

Malleable Iron Rigid to Flex Coupling Thread / Squeeze Type is an electrical fitting designed to connect rigid metal conduit (RMC) to flexible metal conduit (FMC).



CATALOG NUM BER	TRADE SIZE
RTFC-050	1/2"
RTFC-075	3/4"
RTFC-100	1"
RTFC-125	1-1/4"



Steel Double Bite Saddle Space Saver Connector

Material: Steel
Type: Double bite
Surface Finish: Zinc plated

Applications

Double Bite Saddle Steel Space Saver Connector is a specific type of electrical fitting used in various electrical installations. Its purpose is to connect and secure different types of conduits, such as Electrical Metallic Tubing (EMT) or Flexible Metal Conduit (FMC).



CATALOG NUM BER	TRADE SIZE
DBS-038	3/8"
DBS-050	1/2"
DBS-075	3/4"
DBS-100	1"

Steel Double Bite Saddle Connector Straight Type with Insulated Throat

Material: Steel
Type: Double bite
Surface Finish: Zinc plated

Applications

Double Bite Saddle Connector Straight Type with Insulated Throat is a specific type of electrical fitting used to connect and secure electrical conduits. The insulation is made of a material like nylon, which helps to protect the electrical wires from damage as they pass through the connector.



CATALOG NUM BER	TRADE SIZE
BSST-038	3/8"
BSST-050	1/2"
BSST-075	3/4"
BSST-100	1"
BSST-125	1-1/4"
BSST-150	1-1/2"
BSST-200	2"
BSST-250	2-1/2"
BSST-300	3"
BSST-400	4"



Malleable Iron Double Bite Saddle Connector 45 Degree Type with Insulated Throat

Material: Malleable iron
Type: 45 degree
Surface Finish: Zinc plated

Applications

Malleable Iron Double Bite Saddle Connector 45 Degree Type with Insulated Throat is a specific type of electrical fitting that is used to connect and secure electrical conduits in a 45-degree angle.



CATALOG NUM BER	TRADE SIZE
DBFF-038	3/8"
DBFF-050	1/2"
DBFF-075	3/4"

Malleable Iron Double Bite Saddle Connector 90 Degree Type with Insulated Throat

Material: Malleable iron
Type: 90 degree
Surface Finish: Zinc plated

Applications

Malleable Iron Double Bite Saddle Connector 90 Degree Type with Insulated Throat is an electrical fitting designed to connect and secure electrical conduits at a 90-degree angle.



CATALOG NUM BER	TRADE SIZE
DBFN-038	3/8"
DBFN-050	1/2"
DBFN-075	3/4"



Steel Quicklock Connector Snap-In Set Screw Type with Insulated Throat

Material: Steel
Type: Snap-in
Surface Finish: Zinc plated

Applications

Quicklock Connector Snap-In Set Screw Type with Insulated Throat is an electrical fitting used to connect electrical conduits to a junction box, enclosure, or other electrical fittings quickly and securely.



Single



Duplex

CATALOG NUMBER	TRADE SIZE
QLSI-050	1/2" Single
QLSI-075	3/4" Single
QLSD-050	1/2" Duplex

Steel Double Bite Quicklock Connector Snap-In Set Screw Type with Insulated Throat

Material: Steel
Type: Quicklock
Surface Finish: Zinc plated

Applications

Double Bite Quicklock Connector Snap-In Set Screw Type with Insulated Throat is a type of electrical fitting used to connect and secure electrical conduits to junction boxes, enclosures, or other electrical equipment.



CATALOG NUM BER	TRADE SIZE
DBSS-050	1/2"



Zinc Double Duplex Connector 90 Degree Type

Material: Zinc die cast
Type: 90 degree
Surface Finish: Polishing

Applications

Zinc Double Duplex Connector 90 Degree Type is a specific type of electrical conduit fitting used for joining two conduits at a right angle (90 degrees) to an electrical box, junction box, or another conduit.



CATALOG NUM BER	TRADE SIZE
BXFCA-050	1/2"
BXFCA-075	3/4"
BXFCA-100	1"
BXFCA-125	1-1/4"
BXFCA-150	1-1/2"
BXFCA-200	2"

Malleable Iron Double Duplex Connector 90 Degree Type

Material: Malleable iron
Type: 90 degree
Surface Finish: Zinc plated

Applications

Malleable Iron Double Duplex Connector 90 Degree Type is an electrical conduit fitting used to securely connect two conduits at a 90-degree angle to an electrical box, junction box, or another conduit.



CATALOG NUM BER	TRADE SIZE
MIBXFCA-050	1/2"
MIBXFCA-075	3/4"
MIBXFCA-100	1"
MIBXFCA-125	1-1/4"
MIBXFCA-150	1-1/2"
MIBXFCA-200	2"



Steel Double Bite Saddle Combination Couplings
EMT Set Screw to Flex

Material: Steel
Type: Combination
Surface Finish: Zinc plated

Applications

Double Bite Saddle Combination Couplings (EMT Set Screw to Flex) are electrical fittings used to connect Electrical Metallic Tubing (EMT) to Flexible Metal Conduit (FMC).



CATALOG NUM BER	TRADE SIZE
DBES-038	3/8"
DBES-050	1/2"
DBES-075	3/4"

Steel Double Bite Saddle Combination Couplings
EMT Compression to Flex

Material: Steel
Type: Combination
Surface Finish: Zinc plated

Applications

Double Bite Saddle Combination Couplings (EMT Compression to Flex) are specialized electrical fittings designed to connect Electrical Metallic Tubing (EMT) using a compression mechanism to Flexible Metal Conduit (FMC) using a double bite saddle.



CATALOG NUM BER	TRADE SIZE
EBEC-038	3/8"
EBEC-050	1/2"
EBEC-075	3/4"



Zinc NM Cable Connector Clamp Type

Material: Zinc die cast

Type: Clamp

Surface Finish: Polishing

Applications

NM Cable Romex Connector Clamp Type is a specific type of electrical fitting used to secure and connect non-metallic (NM) sheathed cable, commonly known as Romex, to an electrical box, panel, or enclosure.



CATALOG NUM BER	TRADE SIZE
RMX-038	3/8"
RMX-050	1/2"
RMX-075	3/4"
RMX-100	1"
RMX-125	1-1/4"
RMX-150	1-1/2"
RMX-200	2"

Zinc BX-Flex Connector Set Screw Type

Material: Zinc die cast

Type: Set screw

Surface Finish: Polishing

Applications

Zinc BX-Flex Connector Set Screw Type is an electrical fitting designed to connect and secure BX (armored cable) or flexible metal conduit to an electrical box, panel, or enclosure.



CATALOG NUM BER	TRADE SIZE
BLSS-038	3/8"



Zinc FMC,AC,MC Cable Connector with Saddle Type

Material: Zinc die cast
Type: Saddle
Surface Finish: Polishing

Applications

Zinc FMC, AC, MC Cable Connector with Saddle Type is a specific type of electrical fitting designed to connect and secure FMC (Flexible Metal Conduit), AC (Armored Cable), or MC (Metal-Clad) cable to an electrical box, panel, or enclosure.



CATALOG NUM BER	TRADE SIZE
FAMC-038	3/8" (1/2" KO)
FAMC-050	1/2"
FAMC-075	3/4"
FAMC-100	1"

Zinc FMC,AC,MC Cable Connector with Steel Band Saddle Type

Material: Zinc die cast
Type: Saddle
Surface Finish: Polishing

Applications

Zinc FMC, AC, MC Cable Connector with Steel Band Saddle Type is a specific type of electrical fitting designed to connect and secure FMC (Flexible Metal Conduit), AC (Armored Cable), or MC (Metal-Clad) cable to an electrical box, panel, or enclosure.



CATALOG NUM BER	TRADE SIZE
FAMS-038	3/8" (1/2" KO)

Zinc Duplex Connector One Screw Clamp Type

Material: Zinc die cast
Type: Clamp type
Surface Finish: Polishing

Applications

Zinc Duplex Cable Connector One Screw Clamp Type is a specific type of electrical fitting used to secure and connect two electrical cables to an electrical box, junction box, or another conduit.

CATALOG NUM BER	TRADE SIZE
DPOS-038	3/8"



Zinc Duplex Connector One Screw Set Screw Type

Material: Zinc die cast
Type: Set screw
Surface Finish: Polishing

Applications

Duplex Cable Connector One Screw Type is a specific kind of electrical fitting designed to secure and connect two cables to an electrical box, junction box, or another conduit system.

CATALOG NUM BER	TRADE SIZE
DPOC-038	3/8"





Aluminum Service Entrance Cap Clamp Type
Aluminum Service Entrance Cap Thread Type

Service Entrance Caps

Aluminum Service Entrance Cap Clamp Type

Material: Aluminum die cast

Type: Clamp type

Surface Finish: Polishing

Applications

Aluminum Service Entrance Cap Clamp Type is a crucial component in electrical installations, providing protection and secure connection for service entrance cables entering a building. Its aluminum construction ensures durability and resistance to corrosion, making it ideal for outdoor applications in residential, commercial, and industrial settings.



CATALOG NUM BER	TRADE SIZE
ECP-050	1/2"
ECP-075	3/4"
ECP-100	1"
ECP-125	1-1/4"
ECP-150	1-1/2"
ECP-200	2"
ECP-250	2-1/2"
ECP-300	3"
ECP-400	4"

Aluminum Service Entrance Cap Thread Type

Material: Aluminum die cast

Type: Thread type

Surface Finish: Polishing

Applications

Aluminum Service Entrance Cap Thread Type is a crucial component in electrical installations, providing protection and a secure connection for service entrance cables entering a building. Its aluminum construction ensures durability and resistance to corrosion, making it ideal for outdoor applications in residential, commercial, and industrial settings. The threaded connection provides a tight and secure fit, enhancing the reliability and protection of the service entrance.



CATALOG NUM BER	TRADE SIZE
SEP-050	1/2"
SEP-075	3/4"
SEP-100	1"
SEP-125	1-1/4"
SEP-150	1-1/2"
SEP-200	2"
SEP-250	2-1/2"
SEP-300	3"
SEP-400	4"





Steel EMT Strap One Hole Type
Steel EMT Strap Two Hole Type
Steel Rigid Strap One Hole Type
Steel Rigid Strap Two Hole Type
Malleable Iron Rigid Strap One Hole Type
Malleable Iron Clamp Back Spacer
Malleable Iron Conduit Clamp J Type
Malleable Iron Conduit Right Angle Type
Malleable Iron Conduit Clamp Parallel Type
Malleable Iron Conduit Clamp Edge Type
Steel U-bolts with Hex Nuts
Steel Spring Conduit Clip
Steel Conduit Hanger
Steel Universal Strut Clamp
Steel Beam Clamp
Malleable Iron Beam Clamp

Conduit Support, Clamps and Hangers

Steel EMT Strap One Hole Type

Material: Steel
Type: One hole
Surface Finish: Zinc plated

Applications

Steel EMT Strap One Hole Type is an essential component for securing EMT conduits in various settings. Its steel construction ensures durability and strength, while the one-hole design simplifies installation, making it a practical choice for many electrical conduit installation projects.



CATALOG NUM BER	TRADE SIZE
EOH-050	1/2"
EOH-075	3/4"
EOH-100	1"
EOH-125	1-1/4"
EOH-150	1-1/2"
EOH-200	2"
EOH-250	2-1/2"
EOH-300	3"
EOH-400	4"

Steel EMT Strap Two Hole Type

Material: Steel
Type: Two hole
Surface Finish: Zinc plated

Applications

Steel EMT Strap Two Hole Type is an essential component for securely fastening EMT conduits in various settings. Its steel construction ensures durability and strength, while the two-hole design provides enhanced stability and support, making it a reliable choice for more demanding electrical conduit installation projects.



CATALOG NUM BER	TRADE SIZE
ETH-050	1/2"
ETH-075	3/4"
ETH-100	1"
ETH-125	1-1/4"
ETH-150	1-1/2"
ETH-200	2"
ETH-250	2-1/2"
ETH-300	3"
ETH-400	4"



Steel Rigid Strap One Hole Type

Material: Steel
Type: One hole
Surface Finish: Zinc plated

Applications

Steel Rigid Strap One Hole Type is an essential component for securing RMC conduits in various settings. Its steel construction ensures durability and strength, while the one-hole design simplifies installation, making it a practical choice for many electrical conduit projects.



CATALOG NUM BER	TRADE SIZE
ROH-050	1/2"
ROH-075	3/4"
ROH-100	1"
ROH-125	1-1/4"
ROH-150	1-1/2"
ROH-200	2"
ROH-250	2-1/2"
ROH-300	3"
ROH-400	4"

Steel Rigid Strap Two Hole Type

Material: Steel
Type: Two hole
Surface Finish: Zinc plated

Applications

Steel Rigid Strap Two Hole Type is an essential component for securely fastening RMC conduits in various settings. Its steel construction ensures durability and strength, while the two-hole design provides enhanced stability and support, making it a reliable choice for more demanding electrical conduit installation projects.



CATALOG NUM BER	TRADE SIZE
RTH-050	1/2"
RTH-075	3/4"
RTH-100	1"
RTH-125	1-1/4"
RTH-150	1-1/2"
RTH-200	2"
RTH-250	2-1/2"
RTH-300	3"
RTH-400	4"



Malleable Iron Rigid Strap One Hole Type

Material: Malleable iron
Type: One hole
Surface Finish: Zinc plated

Applications

Malleable Iron Rigid Strap One Hole Type is a robust and practical choice for securing RMC in a variety of settings. Its malleable iron construction offers enhanced durability and shock resistance, making it particularly suitable for environments where the conduit might experience physical stress.



CATALOG NUM BER	TRADE SIZE
ROHS-050	1/2"
ROHS-075	3/4"
ROHS-100	1"
ROHS-125	1-1/4"
ROHS-150	1-1/2"
ROHS-200	2"
ROHS-250	2-1/2"
ROHS-300	3"
ROHS-325	3-1/2"
ROHS-400	4"
ROHS-500	5"
ROHS-600	6"

Malleable Iron Clamp Back Spacer

Material: Malleable iron
Type: Clamp back
Surface Finish: Zinc plated

Applications

Malleable Iron Clamp Back Spacer is a specialized hardware component used in conjunction with conduit straps to provide additional clearance between the conduit and the mounting surface.



CATALOG NUM BER	TRADE SIZE
ERCB-050	1/2"
ERCB-075	3/4"
ERCB-100	1"
ERCB-125	1-1/4"
ERCB-150	1-1/2"
ERCB-200	2"
ERCB-250	2-1/2"
ERCB-300	3"
ERCB-350	3-1/2"
ERCB-400	4"
ERCB-500	5"
ERCB-600	6"



Malleable Iron Conduit Clamp J Type

Material: Malleable iron
Type: J
Surface Finish: Zinc plated or Hot dipped galvanized

Applications

Malleable Iron Conduit Clamp J Type is a durable and reliable component for securing electrical conduits in a variety of settings. Its J-shaped design provides a secure hold and its malleable iron construction ensures it can withstand physical stress and environmental factors, making it a versatile choice for both indoor and outdoor applications.



CATALOG NUM BER	TRADE SIZE
JC-050	1/2"
JC-075	3/4"
JC-100	1" - 1-1/4"
JC-150	1-1/2" - 2"
JC-250	2-1/2" - 3"
JC-350	3-1/2" - 4"

Malleable Iron Conduit Right Angle Type

Material: Steel
Type: Set screw
Surface Finish: Zinc plated or Hot dipped galvanized

Applications

Malleable Iron Conduit Right Angle Type is a specialized fitting used in electrical installations to securely fasten conduits at right angles. This type of fitting is essential for creating structured and organized conduit runs, particularly in corners or when conduits need to change direction.



CATALOG NUM BER	TRADE SIZE
RAC-050	1/2"
RAC-075	3/4"
RAC-100	1"
RAC-125	1-1/4"
RAC-150	1-1/2"
RAC-200	2"
RAC-250	2-1/2"
RAC-300	3"
RAC-350	3-1/2"
RAC-400	4"



Malleable Iron Conduit Clamp Parallel Type

Material: Malleable iron

Type: Parallel

Surface Finish: Zinc plated or Hot dipped galvanized

Applications

Malleable Iron Conduit Clamp Parallel Type is a specialized hardware component used to secure conduits in parallel alignment to a mounting surface. This type of clamp ensures that conduits run parallel to the mounting surface, providing a neat and organized installation.



CATALOG NUM BER	TRADE SIZE
PARC-050	1/2"
PARC-075	3/4"
PARC-100	1"
PARC-125	1-1/4"
PARC-150	1-1/2"
PARC-200	2"
PARC-250	2-1/2"
PARC-300	3"
PARC-350	3-1/2"
PARC-400	4"

Malleable Iron Conduit Clamp Edge Type

Material: Malleable iron

Type: Edge

Surface Finish: Zinc plated or Hot dipped galvanized

Applications

Malleable Iron Conduit Clamp Edge Type is a crucial component for securing electrical conduits along the edges of surfaces in various installation settings. Its durable malleable iron construction and corrosion-resistant properties make it suitable for both indoor and outdoor use, providing reliable and long-lasting support for structured conduit systems.



CATALOG NUM BER	TRADE SIZE
ETC-050	1/2"
ETC-075	3/4"
ETC-100	1"
ETC-125	1-1/4"
ETC-150	1-1/2"
ETC-200	2"
ETC-250	2-1/2"
ETC-300	3"



Steel U-bolts with Hex Nuts

Material: Steel

Type: U

Surface Finish: Zinc plated or Hot dipped galvanized

Applications

Steel U-bolts with hex nuts are versatile fastening devices commonly used in various construction, automotive, and plumbing applications to secure pipes, rods, or other cylindrical objects to a surface or to hold two parts together.



CATALOG NUM BER	TRADE SIZE	THREAD SIZE
UMB-050	1/2"	5/16" - 18
UMB-075	3/4"	5/16" - 18
UMB-100	1"	5/16" - 18
UMB-125	1-1/4"	5/16" - 18
UMB-150	1-1/2"	5/16" - 18
UMB-200	2"	3/8" - 16
UMB-250	2-1/2"	3/8" - 16
UMB-300	3"	3/8" - 16
UMB-350	3-1/2"	3/8" - 16
UMB-400	4"	3/8" - 16

Steel Spring Conduit Clip

Material: Steel

Type: Spring

Surface Finish: Electrophoresis

Applications

Spring Conduit Clips are efficient and reliable tools for securing electrical conduits in various settings. Their spring-loaded design allows for quick, tool-free installation and a secure hold, making them particularly useful in maintenance, retrofitting, and installations in tight spaces.



CATALOG NUM BER	TRADE SIZE
SCF-050	1/2"
SCF-075	3/4"
SCF-100	1"
SCF-125	1-1/4"
SCF-150	1-1/2"
SCF-200	2"
SCF-250	2-1/2"
SCF-300	3"
SCF-350	3-1/2"
SCF-400	4"



Steel Conduit Hanger

Material: Steel
Surface Finish: Zinc plated

Applications

Conduit Hangers are vital components in electrical installations, providing necessary support and organization for conduit runs. They ensure that electrical conduits are securely mounted and maintained, contributing to the overall safety and efficiency of electrical systems.



CATALOG NUM BER	TRADE SIZE
SCH-050	1/2"
SCH-075	3/4"
SCH-100	1"
SCH-125	1-1/4"
SCH-150	1-1/2"
SCH-200	2"
SCH-250	2-1/2"
SCH-300	3"
SCH-350	3-1/2"
SCH-400	4"

Steel Universal Strut Clamp

Material: Steel
Type: Universal
Surface Finish: Zinc plated

Applications

Universal Strut Clamps are versatile and adjustable clamps used to secure EMT/IMC/Rigid Conduit to strut channels. They provide a strong and reliable method of attachment, making them a popular choice in construction and industrial applications.



CATALOG NUM BER	TRADE SIZE
USCP-050	1/2"
USCP-075	3/4"
USCP-100	1"
USCP-125	1-1/4"
USCP-150	1-1/2"
USCP-200	2"
USCP-250	2-1/2"
USCP-300	3"
USCP-350	3-1/2"
USCP-400	4"



Steel Beam Clamp

Material: Steel
Surface Finish: Zinc plated

Applications

Steel Beam Clamp is a device used to attach equipment, cables, or other components to steel beams or girders in construction and industrial applications. These clamps are designed to provide a secure and reliable attachment point without the need for drilling or welding, preserving the integrity of the steel structure.



CATALOG NUMBER	TRADE SIZE	JAW OPENING	LOAD RATING, LBS
EBM-025	1/4 - 20	3/4"	100
EBM-038	3/8 - 16	7/8"	200

Malleable Iron Beam Clamp

Material: Malleable iron
Surface Finish: Zinc plated or Hot dipped galvanized

Applications

Malleable Iron Beam Clamps are versatile and robust devices used to attach various components to steel beams without damaging the beam structure. Their strength, ease of installation, and adjustable nature make them an essential tool in construction, electrical, plumbing, and industrial applications



CATALOG NUMBER	TRADE SIZE	TAP SIZE	JAW OPENING	LOAD RATING, LBS
EBMI-075-1	3/4"	10 - 24	9/16"	50
EBMI-075-2	3/4"	1/4 - 20	9/16"	50
EBMI-100-1	1"	10 - 24	3/4"	60
EBMI-100-2	1"	1/4 - 20	3/4"	60
EBMI-150	1-1/2"	5/16 - 18	1-9/16"	80
EBMI-200-1	2"	3/8 - 16	1-13/16"	100
EBMI-200-2	2"	1/2 - 13	1-13/16"	100
EBMI-250	2-1/2"	1/2 - 13	2-1/4"	200





Aluminum Conduit Body C type
Aluminum Conduit Body LB type
Aluminum Conduit Body LL type
Aluminum Conduit Body LR type
Aluminum Conduit Body T type
Aluminum Conduit Body Covers
Conduit Body Gaskets

Aluminum Conduit Bodies

Aluminum EMT Conduit Bodies

Material: aluminum die cast

Type: C, LB, LL, LR, T

Surface Finish: Powder coated

Applications

MTE ELECTRO EMT conduit bodies are used with EMT conduit, for pulling access or to split into multiple directions. Removable cover allows access for maintenance and making taps and splices to conductors.

Features

- Durable die cast aluminum construction.
- Premium powder coat finish.
- Includes NBR synthetic rubber gasket.
- Stamped aluminum cover.



EMT Conduit Body C With Gasket And Cover

CATALOG NUM BER	TRADE SIZE	DIM ENSIONS(Inch)		
		HEIGHT	LENGTH	WIDTH
CB-AL-EC1	1/2"	1.59	4.72	1.34
CB-AL-EC2	3/4"	1.86	5.51	1.56
CB-AL-EC3	1"	2.13	6.46	1.82
CB-AL-EC4	1-1/4"	2.74	8.35	2.51
CB-AL-EC5	1-1/2"	2.74	8.35	2.51
CB-AL-EC6	2"	3.64	10.55	3.19



EMT Conduit Body LB With Gasket And Cover

CATALOG NUM BER	TRADE SIZE	DIM ENSIONS(Inch)		
		HEIGHT	LENGTH	WIDTH
CB-AL-ELB1	1/2"	2.32	4.31	1.34
CB-AL-ELB2	3/4"	2.63	5.08	1.56
CB-AL-ELB3	1"	3.01	5.92	1.82
CB-AL-ELB4	1-1/4"	3.76	7.82	2.51
CB-AL-ELB5	1-1/2"	3.76	7.82	2.51
CB-AL-ELB6	2"	4.74	10.05	3.19



EMT Conduit Body LL With Gasket And Cover



CATALOG NUM BER	TRADE SIZE	DIM ENSIONS(Inch)		
		HEIGHT	LENGTH	WIDTH
CB-AL-ELL1	1/2"	1.59	4.31	2.03
CB-AL-ELL2	3/4"	1.86	5.08	2.30
CB-AL-ELL3	1"	2.13	5.92	2.68
CB-AL-ELL4	1-1/4"	2.74	7.82	3.52
CB-AL-ELL5	1-1/2"	2.74	7.82	3.52
CB-AL-ELL6	2"	3.64	10.05	4.27

EMT Conduit Body LR With Gasket And Cover



CATALOG NUM BER	TRADE SIZE	DIM ENSIONS(Inch)		
		HEIGHT	LENGTH	WIDTH
CB-AL-ELR1	1/2"	1.59	4.31	2.03
CB-AL-ELR2	3/4"	1.86	5.08	2.30
CB-AL-ELR3	1"	2.13	5.92	2.68
CB-AL-ELR4	1-1/4"	2.74	7.82	3.52
CB-AL-ELR5	1-1/2"	2.74	7.82	3.52
CB-AL-ELR6	2"	3.64	10.05	4.27

EMT Conduit Body T With Gasket And Cover



CATALOG NUM BER	TRADE SIZE	DIM ENSIONS(Inch)		
		HEIGHT	LENGTH	WIDTH
CB-AL-ET1	1/2"	1.59	4.72	2.03
CB-AL-ET2	3/4"	1.86	5.51	2.30
CB-AL-ET3	1"	2.13	6.46	2.68
CB-AL-ET4	1-1/4"	2.74	8.35	3.52
CB-AL-ET5	1-1/2"	2.74	8.35	3.52
CB-AL-ET6	2"	3.64	10.55	4.27

Aluminum Rigid Conduit Bodies

Material: Aluminum die cast

Type: C, LB, LL, LR, T

Surface Finish: Powder coated

Applications

MTE ELECTRO Zinc EMT connectors set screw type are used to economically bond EMT conduit to a box or enclosure in dry locations

Features

- Rugged metallic construction provides mechanical protection for the raceway
- Provide concrete-tight connections when taped
- Male hub threads NPS
- Assembled with a die cast locknut
- Insulated type are available.

Rigid Conduit Body C With Gasket And Cover



CATALOG NUM BER	TRADE SIZE	DIM ENSIONS(Inch)		
		HEIGHT	LENGTH	WIDTH
CB-AL-RC1	1/2"	1.59	4.72	1.34
CB-AL-RC2	3/4"	1.86	5.51	1.56
CB-AL-RC3	1"	2.13	6.46	1.82
CB-AL-RC4	1-1/4"	2.74	8.35	2.51
CB-AL-RC5	1-1/2"	2.74	8.35	2.51
CB-AL-RC6	2"	3.64	10.55	3.19

Rigid Conduit Body LB With Gasket And Cover



CATALOG NUM BER	TRADE SIZE	DIM ENSIONS(Inch)		
		HEIGHT	LENGTH	WIDTH
CB-AL-RLB1	1/2"	2.32	4.31	1.34
CB-AL-RLB2	3/4"	2.63	5.08	1.56
CB-AL-RLB3	1"	3.01	5.92	1.82
CB-AL-RLB4	1-1/4"	3.76	7.82	2.51
CB-AL-RLB5	1-1/2"	3.76	7.82	2.51
CB-AL-RLB6	2"	4.74	10.05	3.19



Rigid Conduit Body LL With Gasket And Cover


CATALOG NUM BER	TRADE SIZE	DIM ENSIONS(Inch)		
		HEIGHT	LENGTH	WIDTH
CB-AL-RLL1	1/2"	1.59	4.31	2.03
CB-AL-RLL2	3/4"	1.86	5.08	2.30
CB-AL-RLL3	1"	2.13	5.92	2.68
CB-AL-RLL4	1-1/4"	2.74	7.82	3.52
CB-AL-RLL5	1-1/2"	2.74	7.82	3.52
CB-AL-RLL6	2"	3.64	10.05	4.27

Rigid Conduit Body LR With Gasket And Cover


CATALOG NUM BER	TRADE SIZE	DIM ENSIONS(Inch)		
		HEIGHT	LENGTH	WIDTH
CB-AL-RLR1	1/2"	1.59	4.31	2.03
CB-AL-RLR2	3/4"	1.86	5.08	2.30
CB-AL-RLR3	1"	2.13	5.92	2.68
CB-AL-RLR4	1-1/4"	2.74	7.82	3.52
CB-AL-RLR5	1-1/2"	2.74	7.82	3.52
CB-AL-RLR6	2"	3.64	10.05	4.27

Rigid Conduit Body T With Gasket And Cover


CATALOG NUM BER	TRADE SIZE	DIM ENSIONS(Inch)		
		HEIGHT	LENGTH	WIDTH
CB-AL-RT1	1/2"	1.59	4.72	2.03
CB-AL-RT2	3/4"	1.86	5.51	2.30
CB-AL-RT3	1"	2.13	6.46	2.68
CB-AL-RT4	1-1/4"	2.74	8.35	3.52
CB-AL-RT5	1-1/2"	2.74	8.35	3.52
CB-AL-RT6	2"	3.64	10.55	4.27

Conduit Body Covers & Gaskets

Material: Aluminum

Applications

MTE ELECTRO Conduit body covers are used with all series conduit bodies.

Features

- Lightweight and corrosion resistant
- Includes screws



Conduit Body Cover

CATALOG NUM BER	TRADE SIZE	DIM ENSIONS(Inch)		
		HEIGHT	LENGTH	WIDTH
CB-AL-571A	1/2"	0.24	3.90	1.34
CB-AL-572A	3/4"	0.24	4.67	1.54
CB-AL-573A	1"	0.24	5.37	1.79
CB-AL-574A	1-1/4"	0.24	7.28	2.50
CB-AL-575A	1-1/2"	0.24	7.28	2.50
CB-AL-576A	2"	0.24	9.49	3.15

Material: Rubber

Applications

MTE ELECTRO Conduit body gaskets are used with all series conduit bodies.

Features

- Provides dust proof seal between conduit body and cover to protect from hazardous elements



Conduit Body Gasket

CATALOG NUM BER	TRADE SIZE	DIM ENSIONS(Inch)		
		HEIGHT	LENGTH	WIDTH
CB-571B	1/2"	0.06	3.90	1.34
CB-572B	3/4"	0.06	4.67	1.54
CB-573B	1"	0.06	5.37	1.79
CB-574B	1-1/4"	0.06	7.28	2.50
CB-575B	1-1/2"	0.06	7.28	2.50
CB-576B	2"	0.06	9.49	3.15





Malleable Iron Form 5 Conduit Body C Type
Malleable Iron Form 5 Conduit Body LB Type
Malleable Iron Form 5 Conduit Body LL Type
Malleable Iron Form 5 Conduit Body LR Type
Malleable Iron Form 5 Conduit Body T Type
Malleable Iron Form 5 Conduit Body TB Type
Malleable Iron Form 5 Conduit Body X Type
Steel Conduit Body Cover with Gasket
Malleable Iron Conduit Body Cover with Gasket

Rigid Conduit Bodies

Malleable Iron Form 5 Conduit Bodies

Standard Materials:

- Malleable iron body
- Steel and malleable iron cover
- Gasket - Neoprene rubber
- Steel screws

Standard Finishes:

- Zinc plated
- Aluminum enameled
- Hot dip galvanized



Applicable Third-Party Standards

- UL Standard 514A
- NEMA:FB-1
NEMA4

Applications:

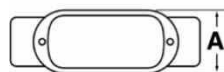
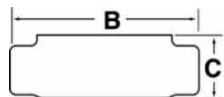
Form 5 malleable iron conduit bodies are used in conduit systems to:

- Act as pull outlets for conductors being installed.
- Provide openings for making splices and taps in conductors.
- Act as mounting outlets for lighting fixtures and wiring devices.
- Connect conduit sections.
- Provide taps for branch conduit runs.
- Make 90-degree bends in conduit runs.
- Provide for access to conductors for maintenance and future system change

Features:

- Interchangeable with Appleton Form 35 conduit bodies.
- Built-in rollers on 11/4" to 4" C and LB bodies to facilitate wire pulling.
- Smooth and rounded integral bushings for protection of wire insulation
- Solid neoprene gaskets may be converted to open type by pulling out perforated center section.
- Steel cover screws.
- Domed sheet steel covers provide additional cubic capacity.
- Integral gasket cover provides NEMA 4 rating.

Form 5 Threaded C Conduit Bodies

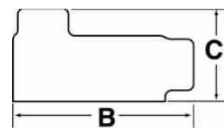


Form 5 C Type



CATALOG NUM BER	TRADE SIZE	DIMENSIONS(Inch)		
		A	B	C
CB-MI-RC1	1/2"	1.313	5.375	1.375
CB-MI-RC2	3/4"	1.500	6.000	1.688
CB-MI-RC3	1"	1.813	7.063	1.875
CB-MI-RC4	1-1/4"	2.625	9.000	2.750
CB-MI-RC5	1-1/2"	2.625	9.000	2.813
CB-MI-RC6	2"	3.125	11.500	3.313
CB-MI-RC7	2-1/2"	4.313	15.000	3.875
CB-MI-RC8	3"	4.313	15.125	4.750
CB-MI-RC9	3-1/2"	4.875	18.125	5.625
CB-MI-RC10	4"	4.875	18.125	5.625

Form 5 Threaded LB Conduit Bodies

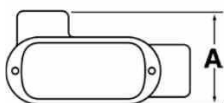
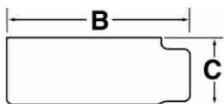


Form 5 LB Type



CATALOG NUM BER	TRADE SIZE	DIMENSIONS(Inch)		
		A	B	C
CB-MI-RLB1	1/2"	1.313	4.680	2.063
CB-MI-RLB2	3/4"	1.500	5.375	2.250
CB-MI-RLB3	1"	1.813	6.190	2.625
CB-MI-RLB4	1-1/4"	2.625	8.125	2.750
CB-MI-RLB5	1-1/2"	2.625	8.125	2.813
CB-MI-RLB6	2"	3.125	10.500	4.438
CB-MI-RLB7	2-1/2"	4.313	13.625	5.375
CB-MI-RLB8	3"	4.313	13.875	5.875
CB-MI-RLB9	3-1/2"	5.625	16.250	6.875
CB-MI-RLB10	4"	5.625	16.250	7.188

Form 5 Threaded LL Conduit Bodies



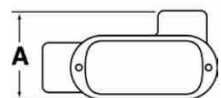
Form 5 LL Type



CATALOG NUM BER	TRADE SIZE	DIMENSIONS(Inch)		
		A	B	C
CB-MI-RLL1	1/2"	2.063	4.688	1.375
CB-MI-RLL2	3/4"	2.250	5.375	1.688
CB-MI-RLL3	1"	2.625	6.188	1.875
CB-MI-RLL4	1-1/4"	2.750	8.125	2.750
CB-MI-RLL5	1-1/2"	3.500	8.125	2.813
CB-MI-RLL6	2"	4.125	10.500	3.313
CB-MI-RLL7	2-1/2"	4.688	13.625	3.875
CB-MI-RLL8	3"	5.875	13.875	4.750
CB-MI-RLL9	3-1/2"	6.125	16.250	5.625
CB-MI-RLL10	4"	6.938	16.250	5.625



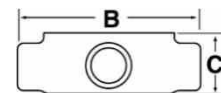
Form 5 Threaded LR Conduit Bodies



Form 5 LR Type

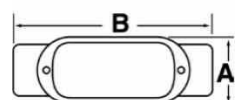
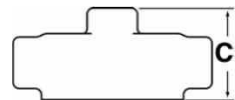
CATALOG NUM BER	TRADE SIZE	DIMENSIONS(Inch)		
		A	B	C
CB-MI-RLR1	1/2"	2.063	4.688	1.375
CB-MI-RLR2	3/4"	2.250	5.375	1.688
CB-MI-RLR3	1"	2.625	6.188	1.875
CB-MI-RLR4	1-1/4"	2.750	8.125	2.750
CB-MI-RLR5	1-1/2"	3.500	8.125	2.813
CB-MI-RLR6	2"	4.125	10.500	3.313
CB-MI-RLR7	2-1/2"	4.688	13.625	3.875
CB-MI-RLR8	3"	5.875	13.875	4.750
CB-MI-RLR9	3-1/2"	6.125	16.250	5.625
CB-MI-RLR10	4"	6.938	16.250	5.625

Form 5 Threaded T Conduit Bodies



Form 5 T Type

CATALOG NUM BER	TRADE SIZE	DIMENSIONS(Inch)		
		A	B	C
CB-MI-RT1	1/2"	2.063	5.625	1.313
CB-MI-RT2	3/4"	2.250	6.000	1.500
CB-MI-RT3	1"	2.625	7.063	1.813
CB-MI-RT4	1-1/4"	2.750	9.000	2.625
CB-MI-RT5	1-1/2"	3.500	9.000	2.625
CB-MI-RT6	2"	4.125	11.500	3.125
CB-MI-RT7	2-1/2"	5.688	15.000	4.313
CB-MI-RT8	3"	5.875	15.125	4.313
CB-MI-RT9	3-1/2"	6.813	18.125	4.875
CB-MI-RT10	4"	8.188	18.125	4.875

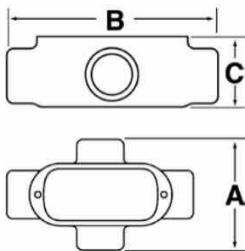


Form 5 TB Type

Form 5 Threaded TB Conduit Bodies

CATALOG NUM BER	TRADE SIZE	DIMENSIONS(Inch)		
		A	B	C
CB-MI-RTB1	1/2"	2.063	5.375	1.313
CB-MI-RTB2	3/4"	2.250	6.000	1.500
CB-MI-RTB3	1"	2.625	7.063	1.813
CB-MI-RTB4	1-1/4"	2.750	9.000	2.625
CB-MI-RTB5	1-1/2"	3.500	9.000	2.625
CB-MI-RTB6	2"	4.125	11.500	3.125





Form 5 Threaded X Conduit Bodies

CATALOG NUM BER	TRADE SIZE	DIM ENSIONS(Inch)		
		A	B	C
CB-MI-RX1	1/2"	2.813	5.438	1.750
CB-MI-RX2	3/4"	2.938	6.063	2.000
CB-MI-RX3	1"	3.563	7.125	2.250
CB-MI-RX4	1-1/4"	4.438	9.125	2.563
CB-MI-RX5	1-1/2"	4.438	9.125	2.750
CB-MI-RX6	2"	5.375	11.750	3.438

Form 5 X Type

Raised Dome Stamped Steel Form 5 Conduit Body Covers and Gaskets

Steel & Neoprene Rubber



CATALOG NUM BER	TRADE SIZE
SW1	1/2"
SW2	3/4"
SW3	1"
SW4	1-1/4" - 1-1/2"
SW5	2"
SW6	2-1/2" - 3"
SW7	3-1/2" - 4"

Malleable Iron Form 5 Conduit Body Covers and Gaskets

Malleable Iron & Neoprene Rubber



CATALOG NUM BER	TRADE SIZE
MW1	1/2"
MW2	3/4"
MW3	1"
MW4	1-1/4" - 1-1/2"
MW5	2"
MW6	2-1/2" - 3"
MW7	3-1/2" - 4"



الوصفات السعودية
Saudi Standards



Gray Iron Form 7 Conduit Bodies

Standard Materials:

- Gray iron body
- Steel and gray iron cover
- Gasket - Neoprene rubber
- Stainless steel screws

Standard Finishes:

- Zinc plated
- Aluminum enameled
- Hot dip galvanized

Applicable Third-Party Standards

- UL Standard 514A
- NEMA:FB-1



Applications:

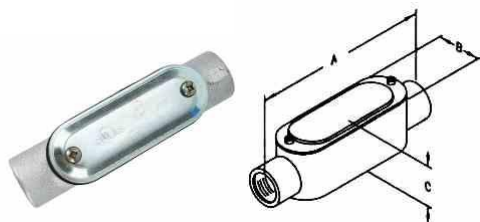
Form 7 gray iron conduit bodies are used in conduit systems to:

- Serve as pulling fittings.
- Make bends in conduit system.
- Provide openings for splicing
- Connect and change direction of conduit runs.
- Allow connections for branch runs.
- Permit access to conductors for maintenance.

Features:

- Smooth, rounded integral bushings in hubs protect conductor insulation.
- Accurately tapped, tapered threads for tight, rigid joints and excellent ground continuity.
- Gray iron bodies with cast covers and gasket are suitable for use in wet locations.
- Unique clip cover design allows easy removal at any later time, without damaging the conduit body, the cover is secured with clips, not screws.
- Flat back design provides greater cubic content for easier wire pulling, and more room for splicing, Fits flush and snug against flat surfaces for more stable installation.
- Smooth hub bushings and cover openings protect conductor insulation. Smooth hub openings allow easy conduit joining. Form 7 Conduit Bodies
- Pan-head cover screws secure cover clips and provide superior screwdriver seating and torque. Cover screws and clips are captive to prevent loss.
- Hub size (inches), body style, compliance data, maximum wire number/size and cubic capacity molded into body.

Form 7 Threaded C Conduit Bodies

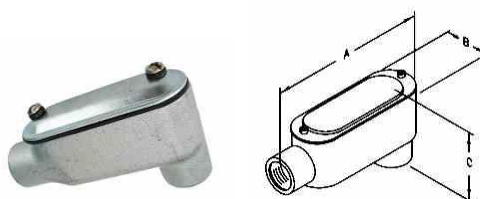


Form 7 C Type



CATALOG NUM BER	TRADE SIZE	DIMENSIONS(Inch)		
		A	B	C
GC-050	1/2"	5.31	1.31	1.38
GC-075	3/4"	6.00	1.56	1.69
GC-100	1"	7.00	1.75	1.88
GC-125	1-1/4"	7.63	2.19	2.38
GC-150	1-1/2"	8.82	2.44	2.63
GC-200	2"	9.25	3.00	3.25
GC-250	2-1/2"	12.19	4.19	3.63
GC-300	3"	12.19	4.19	4.44

Form 7 Threaded LB Conduit Bodies

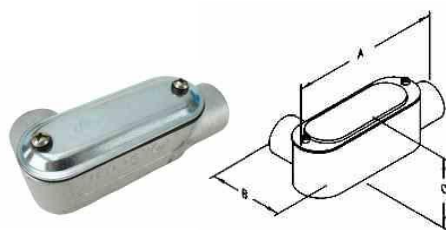


Form 7 LBType



CATALOG NUM BER	TRADE SIZE	DIMENSIONS(Inch)		
		A	B	C
GLB-050	1/2"	4.50	1.31	2.19
GLB-075	3/4"	5.50	1.50	2.50
GLB-100	1"	6.44	1.75	2.81
GLB-125	1-1/4"	6.56	2.19	3.38
GLB-150	1-1/2"	7.13	2.44	3.63
GLB-200	2"	8.13	3.00	4.38
GLB-250	2-1/2"	10.50	4.25	5.31
GLB-300	3"	10.63	4.25	6.06
GLB-350	3-1/2"	12.63	5.19	6.56
GLB-400	4"	12.63	5.19	7.00

Form 7 Threaded LL Conduit Bodies

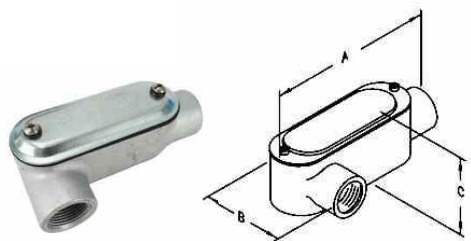


Form 7 LL Type



CATALOG NUM BER	TRADE SIZE	DIMENSIONS(Inch)		
		A	B	C
GLL-050	1/2"	4.56	2.13	1.44
GLL-075	3/4"	5.13	2.38	1.69
GLL-100	1"	6.06	2.69	1.88
GLL-125	1-1/4"	6.56	3.19	2.38
GLL-150	1-1/2"	7.13	3.50	2.63
GLL-200	2"	8.13	4.13	3.25

Form 7 Threaded LR Conduit Bodies

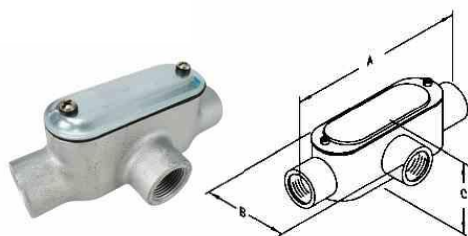


Form 7 LR Type



CATALOG NUM BER	TRADE SIZE	DIM ENSIONS(Inch)		
		A	B	C
GLR-050	1/2"	4.56	2.13	1.44
GLR-075	3/4"	5.13	2.38	1.69
GLR-100	1"	6.06	2.69	1.88
GLR-125	1-1/4"	6.50	3.13	2.25
GLR-150	1-1/2"	7.19	3.50	2.50
GLR-200	2"	8.19	4.06	3.25

Form 7 Threaded T Conduit Bodies

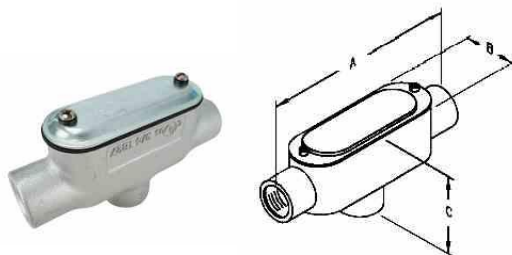


Form 7 T Type



CATALOG NUM BER	TRADE SIZE	DIMENSIONS(Inch)		
		A	B	C
GT-050	1/2"	5.50	2.25	1.88
GT-075	3/4"	6.13	2.44	2.13
GT-100	1"	7.06	2.75	2.31
GT-125	1-1/4"	7.63	3.19	2.38
GT-150	1-1/2"	8.19	3.50	3.50
GT-200	2"	9.25	4.13	4.13
GT-250	2-1/2"	12.00	5.75	5.75
GT-300	3"	12.19	5.88	5.88
GT-350	3-1/2"	14.25	6.81	6.81
GT-400	4"	14.25	6.81	6.81

Form 7 Threaded TB Conduit Bodies

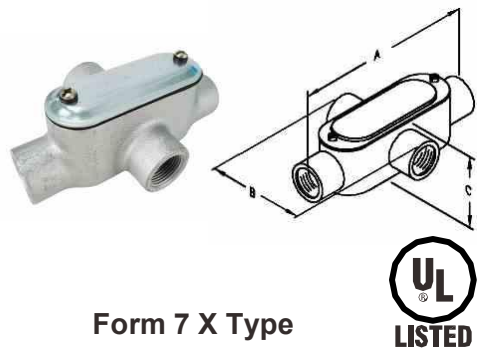


Form 7 TB Type



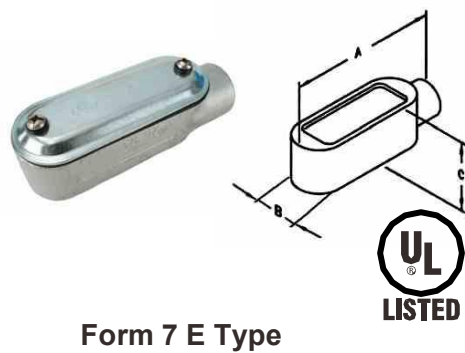
CATALOG NUM BER	TRADE SIZE	DIM ENSIONS(Inch)		
		A	B	C
GTB-050	1/2"	5.50	1.31	2.75
GTB-075	3/4"	6.13	1.56	3.06
GTB-100	1"	7.06	1.75	3.25
GTB-125	1-1/4"	7.63	2.19	2.44
GTB-150	1-1/2"	8.19	2.44	2.63
GTB-200	2"	2.95	3.00	2.25

Form 7 Threaded X Conduit Bodies



CATALOG NUM BER	TRADE SIZE	DIM ENSIONS(Inch)		
		A	B	C
GX-050	1/2"	5.50	3.06	1.88
GX-075	3/4"	6.25	3.25	2.19
GX-100	1"	7.06	3.69	2.31
GX-125	1-1/4"	7.63	4.19	2.38
GX-150	1-1/2"	8.19	4.56	2.63
GX-200	2"	9.25	5.19	3.25

Form 7 Threaded E Conduit Bodies



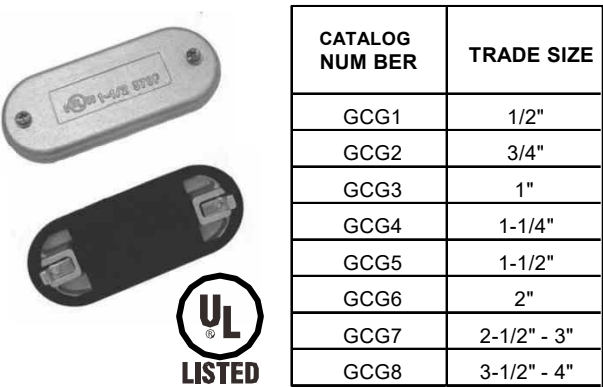
CATALOG NUM BER	TRADE SIZE	DIM ENSIONS(Inch)		
		A	B	C
GE-050	1/2"	4.56	1.31	1.44
GE-075	3/4"	5.19	1.50	1.69
GE-100	1"	6.06	1.75	1.88

Steel Cover



CATALOG NUM BER	TRADE SIZE
SCG1	1/2"
SCG2	3/4"
SCG3	1"
SCG4	1-1/4"
SCG5	1-1/2"
SCG6	2"
SCG7	2-1/2" - 3"
SCG8	3-1/2" - 4"

Malleable Iron Cover



CATALOG NUM BER	TRADE SIZE
GCG1	1/2"
GCG2	3/4"
GCG3	1"
GCG4	1-1/4"
GCG5	1-1/2"
GCG6	2"
GCG7	2-1/2" - 3"
GCG8	3-1/2" - 4"

4" Steel Square Drawn Box 1-1/2" Deep
4" Steel Square Drawn Box 2-1/8" Deep
4" Steel Square Welded Conduit Box 2-1/8" Deep
4" Steel Square Extension Ring 1-1/2" Deep
4" Steel Square Extension Ring 2-1/8" Deep

4-11/16" Steel Square Drawn Box 1-1/2" Deep
4-11/16" Steel Square Drawn Box 2-1/8" Deep
4-11/16" Square Extension Ring 2-1/8" Deep

4" Steel Octagon Drawn Box 1-1/2" Deep
4" Steel Octagon Drawn Box 2-1/8" Deep
4" Steel Octagonal Extension Ring 1-1/2" Deep

4"x2" Steel Handy Box 1-1/2" Deep
4"x2" Steel Handy Box 1-7/8" Deep
4"x2" Steel Handy Box 2-1/8" Deep

4" Square Boxes Cover
4-11/16" Square Boxes Cover
4" Octagon Box Covers
4"x2 Handy Box Covers
Flexible Fixture Hangers

Junction Boxes With Cover
Switch and Socket Boxes

Electrical Junction Boxes and Covers

4" Square Boxes and Extension Rings

Material: Steel

Type: Square

Surface Finish: Galvanized

Applications

MTE ELECTRO Square boxes are installed in walls or ceilings for lighting fixtures, switches or receptacles, square boxes are used where multiple conductor runs are split in two or more directions to bring power to a number of electrical devices. Extension rings provide a means of adding a additional cubic capacity or as an outlet box for surface conduit.



52151-1/2



52151-3/4P



4" Steel Square Drawn Box 1-1/2" Deep

CATALOG NUM BER	DESCRIPTION	KNOCKOUTS	
		SIDES	BOTTOM
52151-1/2	1-1/2" Deep, 1/2" K.O.	(12) - 1/2"	(5) - 1/2"
52151-3/4	1-1/2" Deep, 3/4" K.O.	(8) - 3/4"	(3) - 1/2" & (2) - 3/4"
52151-1/2&3/4	1-1/2" Deep, 1/2 & 3/4" K.O.	(8) - 1/2" & (4) - 3/4"	(3) - 1/2" & (2) - 3/4"
52151-1/2P	1-1/2" Deep, 1/2 K.O., Raised ground emboss & ground screw	(12) - 1/2"	(4) - 1/2"
52151-3/4P	1-1/2" Deep, 3/4 K.O., Raised ground emboss & ground screw	(8) - 3/4"	(2) - 1/2" & (2) - 3/4"
52151-1/2&3/4P	1-1/2" Deep, 1/2 & 3/4 K.O., Raised ground emboss & ground screw	(8) - 1/2" & (4) - 3/4"	(2) - 1/2" & (2) - 3/4"

4" Steel Square Drawn Box 2-1/8" Deep

CATALOG NUM BER	DESCRIPTION	KNOCKOUTS	
		SIDES	BOTTOM
52171-1/2	2-1/8" Deep, 1/2" K.O.	(12) - 1/2"	(5) - 1/2"
52171-3/4	2-1/8" Deep, 3/4" K.O.	(8) - 3/4"	(3) - 1/2" & (2) - 3/4"
52171-1/2&3/4	2-1/8" Deep, 1/2" & 3/4" K.O.	(8) - 1/2" & (4) - 3/4"	(3) - 1/2" & (2) - 3/4"
52171-1	2-1/8" Deep, 1" K.O.	(8) - 1"	(3) - 1/2" & (2) - 3/4"
52171-3/4&1	2-1/8" Deep, 3/4" & 1" K.O.	(4) - 3/4" & (2) - 1"	(3) - 1/2" & (2) - 3/4"
52171-1/2P	2-1/8" Deep, 1/2" K.O., Raised ground emboss & ground screw	(12) - 1/2"	(4) - 1/2"
52171-3/4P	2-1/8" Deep, 3/4" K.O., Raised ground emboss & ground screw	(8) - 3/4"	(2) - 1/2" & (2) - 3/4"
52171-1/2&3/4P	2-1/8" Deep, 1/2" & 3/4" K.O., Raised ground emboss & ground screw	(8) - 1/2" & (4) - 3/4"	(2) - 1/2" & (2) - 3/4"
52171-1P	2-1/8" Deep, 1" K.O., Raised ground emboss & ground screw	(8) - 1"	(2) - 1/2" & (2) - 3/4"
52171-3/4&1P	2-1/8" Deep, 3/4" & 1" K.O., Raised ground emboss & ground screw	(4) - 3/4" & (2) - 1"	(2) - 1/2" & (2) - 3/4"
52171-COMP	2-1/8" Deep, 1/2" & 3/4" Concentric K.O.	(8) - 1/2" & 3/4" CON K.O.	(3) - 1/2" & (2) - 3/4"
52171-COMPA	2-1/8" Deep, 1/2" & 3/4" Concentric K.O.	(8) - 1/2" & 3/4" CON K.O.	(4) - 1/2" & 3/4" CON K.O. & (1) - 1/2"
52171-PC	2-1/8" Deep, 1/2" & 3/4" Concentric K.O. Raised ground emboss & ground screw	(8) - 1/2" & 3/4" CON K.O.	(2) - 1/2" & (2) - 3/4"



52171-3/4



52171-3/4P



52171 - COMP



4" Steel Square Welded Conduit Box 2-1/8" Deep



52171W - 3/4



52171W - 3/4P



CATALOG NUM BER	DESCRIPTION	KNOCKOUTS	
		SIDES	BOTTOM
52171W-1/2	2-1/8" Deep, 1/2" K.O.	(12) - 1/2"	(5) - 1/2"
52171W-3/4	2-1/8" Deep, 3/4" K.O.	(8) - 3/4"	(3) - 1/2" & (2) - 3/4"
52171W-1/2&3/4	2-1/8" Deep, 1/2" & 3/4" K.O.	(8) - 1/2" & (4) - 3/4"	(3) - 1/2" & (2) - 3/4"
52171W-1	2-1/8" Deep, 1" K.O.	(8) - 1"	(3) - 1/2" & (2) - 3/4"
52171W-3/4&1	2-1/8" Deep, 3/4" & 1" K.O.	(4) - 3/4 & (2) - 1"	(3) - 1/2" & (2) - 3/4"
52171W-1/2P	2-1/8" Deep, 1/2" K.O., Raised ground emboss & ground screw	(12) - 1/2"	(4) - 1/2"
52171W-3/4P	2-1/8" Deep, 3/4" K.O., Raised ground emboss & ground screw	(8) - 3/4"	(2) - 1/2" & (2) - 3/4"
52171W-1/2&3/4P	2-1/8" Deep, 1/2" & 3/4" K.O., Raised ground emboss & ground screw	(8) - 1/2" & (4) - 3/4"	(2) - 1/2" & (2) - 3/4"
52171W-1P	2-1/8" Deep, 1" K.O., Raised ground emboss & ground screw	(8) - 1"	(2) - 1/2" & (2) - 3/4"
52171W-3/4&1P	2-1/8" Deep, 3/4" & 1" K.O., Raised ground emboss & ground screw	(4) - 3/4 & (2) - 1"	(2) - 1/2" & (2) - 3/4"

4" Steel Square Extension Ring 1-1/2" Deep



53151 - 3/4



CATALOG NUMBER	DESCRIPTION	KNOCKOUTS
		SIDES
53151-1/2	1-1/2" Deep, 1/2" K.O.	(12) - 1/2"
53151-3/4	1-1/2" Deep, 3/4" K.O.	(8) - 3/4"
53151-1/2&3/4	1-1/2" Deep, 1/2 & 3/4" K.O.	(8) - 1/2" & (4) - 3/4"

4" Steel Square Extension Ring 2-1/8" Deep



53171 - 3/4



CATALOG NUM BER	DESCRIPTION	KNOCKOUTS
		SIDES
53171-3/4	2-1/8" Deep, 3/4" K.O.	(8) - 3/4"
53171-1/2&3/4	2-1/8" Deep, 1/2 & 3/4" K.O.	(8) - 1/2" & (4) - 3/4"
53171-COMP	2-1/8" Deep, 1/2" & 3/4" Concentric K.O.	(8) - 1/2" & 3/4" CON K.O.

4-11/16" Square Boxes and Extension Rings

Material: Steel

Type: Square

Surface Finish: Galvanized

Applications

MTE ELECTRO Square boxes are installed in walls or ceilings for lighting fixtures, switches or receptacles, square boxes are used where multiple conductor runs are split in two or more directions to bring power to a number of electrical devices. Extension rings provide a means of adding a additional cubic capacity or as an outlet box for surface conduit.



72151 - 1/2



4-11/16" Steel Square Drawn Box 1-1/2" Deep

CATALOG NUMBER	DESCRIPTION	KNOCKOUTS	
		SIDES	BOTTOM
72151-1/2	1-1/2" Deep, 1/2" K.O.	(12) - 1/2"	(5) - 1/2"
72151-3/4	1-1/2" Deep, 3/4" K.O.	(8) - 3/4"	(3) - 1/2" & (2) - 3/4"
72151-1/2&3/4	1-1/2" Deep, 1/2 & 3/4" K.O.	(8) - 1/2" & (4) - 3/4"	(3) - 1/2" & (2) - 3/4"



72171 - 1/2&3/4



72171 - 1P



4-11/16" Steel Square Drawn Box 2-1/8" Deep

CATALOG NUM BER	DESCRIPTION	KNOCKOUTS	
		SIDES	BOTTOM
72171-1/2	2-1/8" Deep, 1/2" K.O.	(12) - 1/2"	(5) - 1/2"
72171-3/4	2-1/8" Deep, 3/4" K.O.	(8) - 3/4"	(3) - 1/2" & (2) - 3/4"
72171-1/2&3/4	2-1/8" Deep, 1/2" & 3/4" K.O.	(8) - 1/2" & (4) - 3/4"	(3) - 1/2" & (2) - 3/4"
72171-1	2-1/8" Deep, 1" K.O.	(8) - 1"	(3) - 1/2" & (2) - 3/4"
72171-3/4&1	2-1/8" Deep, 3/4" & 1" K.O.	(4) - 3/4" & (2) - 1"	(3) - 1/2" & (2) - 3/4"
72171-1/2P	2-1/8" Deep, 1/2" K.O. ,Raised ground emboss & ground screw	(12) - 1/2"	(4) - 1/2"
72171-3/4P	2-1/8" Deep, 3/4" K.O. ,Raised ground emboss & ground screw	(8) - 3/4"	(2) - 1/2" & (2) - 3/4"
72171-1/2&3/4P	2-1/8" Deep, 1/2" & 3/4" K.O. ,Raised ground emboss & ground screw	(8) - 1/2" & (4) - 3/4"	(2) - 1/2" & (2) - 3/4"
72171-1P	2-1/8" Deep, 1" K.O. ,Raised ground emboss & ground screw	(8) - 1"	(2) - 1/2" & (2) - 3/4"
72171-3/4&1P	2-1/8" Deep, 3/4" & 1" K.O. ,Raised ground emboss & ground screw	(4) - 3/4" & (2) - 1"	(2) - 1/2" & (2) - 3/4"
52171-COMP	2-1/8" Deep, 1/2" & 3/4" Concentric K.O.	(8) - 1/2" & 3/4" CON K.O.	(3) - 1/2" & (2) - 3/4"



73171 - 1/2&3/4



4-11/16" Square Extension Ring 2-1/8" Deep

CATALOG NUM BER	DESCRIPTION	KNOCKOUTS
		SIDES
73171-1/2&3/4	2-1/8" Deep, 1/2 & 3/4" K.O.	(8) - 1/2" & (4) - 3/4"



Octagonal Boxes and Extension Rings

Material: Steel

Type: Octagon

Surface Finish: Galvanized

Applications

MTE ELECTRO Octagonal boxes are used in the installation of ceiling or wall lighting fixtures. Extension rings provide a means of adding additional cubic capacity or as an outlet box for surface conduit.

4" Steel Octagon Drawn Box 1-1/2" Deep



54151 - 1/2



54151 - 1/2P



CATALOG NUM BER	DESCRIPTION	KNOCKOUTS	
		SIDES	BOTTOM
54151-1/2	1-1/2" Deep, 1/2" K.O.	(4) - 1/2"	(5) - 1/2"
54151-3/4	1-1/2" Deep, 3/4" K.O.	(4) - 3/4"	(3) - 1/2" & (2) - 3/4"
54151-1/2&3/4	1-1/2" Deep, 1/2 & 3/4" K.O.	(2) - 1/2" & (2) - 3/4"	(3) - 1/2" & (2) - 3/4"
54151-1/2P	1-1/2" Deep, 1/2 K.O., Raised ground emboss	(4) - 1/2"	(4) - 1/2"
54151-3/4P	1-1/2" Deep, 3/4 K.O., Raised ground emboss	(4) - 3/4"	(2) - 1/2" & (2) - 3/4"
54151-1/2&3/4P	1-1/2" Deep, 1/2" & 3/4 K.O., Raised ground emboss	(2) - 1/2" & (2) - 3/4"	(2) - 1/2" & (2) - 3/4"
54151-COMP	1-1/2" Deep, 1/2" & 3/4" Concentric K.O.	(4) - 1/2" & 3/4" CON K.O.	(3) - 1/2" & (2) - 3/4"
54151C-COMP	1-1/2" Deep, 1/2" & 3/4" Concentric K.O.	(4) - 1/2" & 3/4" CON K.O.	(4) - 1/2" & 3/4" CON K.O. & (1) - 1/2"
54151-PC	1-1/2" Deep, 1/2" & 3/4" Concentric K.O., Raised ground emboss & ground screw	(4) - 1/2" & 3/4" CON K.O.	(2) - 1/2" & 3/4" CON K.O. & (2) - 1/2"

4" Steel Octagon Side Drawn Box 1-1/2" Deep



54151 - COMP - SP

CATALOG NUMBER	DESCRIPTION	KNOCKOUTS	
		SIDES	BOTTOM
54151-COMP-SP	1-1/2" Deep, 1/2" & 3/4" Concentric K.O.	(8) - 1/2" & 3/4" CON K.O.	(2) - 1/2" & (2) - 3/4"

4" Steel Square Drawn Box 2-1/8" Deep



54171 - 1/2



54171 - 1/2&3/4P



CATALOG NUM BER	DESCRIPTION	KNOCKOUTS	
		SIDES	BOTTOM
54171-1/2	2-1/8" Deep, 1/2" K.O.	(4) - 1/2"	(5) - 1/2"
54171-3/4	2-1/8" Deep, 3/4" K.O.	(4) - 3/4"	(3) - 1/2" & (2) - 3/4"
54171-1/2&3/4	2-1/8" Deep, 1/2 & 3/4" K.O.	(2) - 1/2" & (2) - 3/4"	(3) - 1/2" & (2) - 3/4"
54171-1/2P	2-1/8" Deep, 1/2 K.O., Raised ground emboss & ground screw	(4) - 1/2"	(4) - 1/2"
54171-3/4P	2-1/8" Deep, 3/4 K.O., Raised ground emboss & ground screw	(4) - 3/4"	(2) - 1/2" & (2) - 3/4"
54171-1/2&3/4P	2-1/8" Deep, 1/2" & 3/4 K.O., Raised ground emboss & ground screw	(2) - 1/2" & (2) - 3/4"	(2) - 1/2" & (2) - 3/4"
54171-COMP	2-1/8" Deep, 1/2" & 3/4" Concentric K.O.	(4) - 1/2" & 3/4" CON K.O.	(3) - 1/2" & (2) - 3/4"
54171-COMPA	2-1/8" Deep, 1/2" & 3/4" Concentric K.O.	(4) - 1/2" & 3/4" CON K.O.	(4) - 1/2" & 3/4" CON K.O. & (1) - 1/2"





55151 - 3/4



4" Steel Octagonal Extension Ring 1-1/2" Deep

CATALOG NUMBER	DESCRIPTION	KNOCKOUTS	
		SIDES	
55151-1/2	1-1/2" Deep, 1/2" K.O.	(4) - 1/2"	
55151-3/4	1-1/2" Deep, 3/4" K.O.	(4) - 3/4"	
55151-1/2&3/4	1-1/2" Deep, 1/2 & 3/4" K.O.	(2) - 1/2" & (2) - 3/4"	

Handy Boxes and Extension Rings

Material: Steel

Type: Single device

Surface Finish: Galvanized

Applications

MTE ELECTRO Handy boxes, also called utility boxes, are used for convenience outlets, switch boxes or small junction boxes, handy boxes are popular for exposed work applications (surface mounted wiring). Extension rings provide a means of adding additional cubic capacity or as an outlet box for surface conduit.



58351 - 1/2



4"x2" Steel Handy Box 1-1/2" Deep

CATALOG NUMBER	DESCRIPTION	KNOCKOUTS	
		SIDES	BOTTOM
58351-1/2	1-1/2" Deep, 1/2" K.O.	(8) - 1/2"	(3) - 1/2"
58351-3/4	1-1/2" Deep, 3/4" K.O.	(6) - 3/4"	(2) - 3/4"
58351-1/2&3/4	1-1/2" Deep, 1/2 & 3/4" K.O.	(4) - 1/2" & (4) - 3/4"	(2) - 1/2" & (1) - 3/4"



58361 - 3/4



58361 - 1/2&3/4



4"x2" Steel Handy Box 1-7/8" Deep

CATALOG NUM BER	DESCRIPTION	KNOCKOUTS	
		SIDES	BOTTOM
58361-1/2	1-7/8" Deep, 1/2" K.O.	(8) - 1/2"	(3) - 1/2"
58361-3/4	1-7/8" Deep, 3/4" K.O.	(6) - 3/4"	(2) - 3/4"
58361-1/2&3/4	1-7/8" Deep, 1/2 & 3/4" K.O.	(4) - 1/2" & (4) - 3/4"	(2) - 1/2" & (1) - 3/4"
58361-1/2P	1-7/8" Deep, 1/2 K.O., Raised ground emboss	(8) - 1/2"	(2) - 1/2"
58361-3/4P	1-7/8" Deep, 3/4 K.O., Raised ground emboss	(6) - 3/4"	(1) - 3/4"
58361-1/2&3/4P	1-7/8" Deep, 1/2" & 3/4 K.O., Raised ground emboss	(4) - 1/2" & (4) - 3/4"	(2) - 1/2"
58361-K	1-7/8" Deep, 1/2" & 3/4" Concentric K.O.	(2) - 1/2" & 3/4" CON K.O. & (4) - 1/2" & (2) - 3/4"	(2) - 1/2" & (1) - 3/4"
58361-L	1-7/8" Deep, 1/2" & 3/4" Concentric K.O.	(4) - 1/2" & 3/4" CON K.O. & (4) - 1/2"	(3) - 1/2"
58361-COMP	1-7/8" Deep, 1/2" & 3/4" Concentric K.O.	(6) - 1/2" & 3/4" CON K.O.	(1) - 1/2" & 3/4" CON K.O.
58361-COMPA	1-7/8" Deep, 1/2" & 3/4" Concentric K.O.	(6) - 1/2" & 3/4" CON K.O.	(2) - 1/2" & 3/4" CON K.O.





58371 - 1/2



58371 - 1/2&3/4P



59361 - 1/2



4"x2" Steel Handy Box 2-1/8" Deep

CATALOG NUM BER	DESCRIPTION	KNOCKOUTS	
		SIDES	BOTTOM
58371-1/2	2-1/8" Deep, 1/2" K.O.	(8) - 1/2"	(3) - 1/2"
58371-3/4	2-1/8" Deep, 3/4" K.O.	(6) - 3/4"	(2) - 3/4"
58371-1/2&3/4	2-1/8" Deep, 1/2 & 3/4" K.O.	(4) - 1/2" & (4) - 3/4"	(2) - 1/2" & (1) - 3/4"
58371-1/2P	2-1/8" Deep, 1/2 K.O., Raised ground emboss	(8) - 1/2"	(2) - 1/2"
58371-3/4P	2-1/8" Deep, 3/4 K.O., Raised ground emboss	(6) - 3/4"	(1) - 3/4"
58371-1/2&3/4P	2-1/8" Deep, 1/2" & 3/4 K.O., Raised ground emboss	(4) - 1/2" & (4) - 3/4"	(2) - 1/2"
58371-COMP	2-1/8" Deep, 1/2" & 3/4" Concentric K.O.	(6) - 1/2" & (4) - 3/4"	(2) - 3/4"



4"x2" Steel Handy Box Extension Ring 1-7/8" Deep

CATALOG NUMBER	DESCRIPTION	KNOCKOUTS
		SIDES
59361-1/2	1-1/2" Deep, 1/2" K.O.	(8) - 1/2"
59361-3/4	1-1/2" Deep, 3/4" K.O.	(6) - 3/4"
59361-1/2&3/4	1-1/2" Deep, 1/2 & 3/4" K.O.	(4) - 1/2" & (4) - 3/4"

4" Square Box Covers

4" Square Box Cover



CATALOG NUM BER	DESCRIPTION
52C1	Flat, Blank
52C6	Flat, 1/2" K.O.
52C8	Flat, 3/4" K.O.

4" Square Single Gang Device Ring



CATALOG NUM BER	DESCRIPTION
52C0	Flat
52C10	Raised 1/4"
52C13	Raised 1/2"

4" Square Double Gang Device Ring



CATALOG NUM BER	DESCRIPTION
52C00	Flat
52C20	Raised 1/4"
52C17	Raised 1/2"

4" Square to Round Device Ring



CATALOG NUM BER	DESCRIPTION
52C3	Raised 1/2"



4-11/16" Square Box Covers

4-11/16" Square Single Gang Device Ring



CATALOG NUM BER	DESCRIPTION
72C1	Flat, Blank
72C6	Flat, 1/2" K.O.
72C8	Flat, 3/4" K.O.

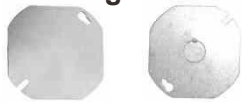


Octagon Box Covers

4" Octagon Box Covers



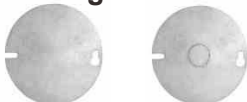
CATALOG NUM BER	DESCRIPTION
54C1	Flat, Blank
54C6	Flat, 1/2" K.O.
54C8	Flat, 3/4" K.O.



4" Octagon Box Round Covers



CATALOG NUM BER	DESCRIPTION
54C1R	Flat, Blank
54C6R	Flat, 1/2" K.O.
54C8R	Flat, 3/4" K.O.



4" Round Raised Cover



CATALOG NUM BER	DESCRIPTION
54C3	Raised 1/2"



Handy Box Covers

4" Handy Box Cover



CATALOG NUM BER	DESCRIPTION
58C1	Blank
58C4	For 4-w ire tw ist-lock single slush, Hole size: 1-19/32"
58C5	For single receptacle, Hole size: 1-13/32"
58C6	1/2" K.O.
58C7	For duplex flush receptacle
58C16	For Single GFCI receptacle
58C30	For one toggle switch
11C1	3/16" Raised duplex



Flexible Fixture Hangers

Square type



CATALOG NUMBER	DESCRIPTION
FHS-050	1/2" Square, Fits 4" square box
FHS-075	3/4" Square, Fits 4" square box

Round type



CATALOG NUMBER	DESCRIPTION
FHR-050	1/2" Round, Fits 4" octagon box
FHR-075	3/4" Round, Fits 4" octagon box



Junction Boxes With Cover

Material: Steel
Type: Square
Surface Finish: Galvanized/Painted
Thickness: 0.9MM / 1MM
Standard: BS 4568

Applications

MTE ELECTRO Junction boxes are installed in walls or ceilings and are used where multiple conductor runs are split in two or more directions to bring power to a number of electrical devices.



CTALOGUE NUMBER	DESCRIPTION	KNOCKOUTS	
		SIDE	BOTTOM
TZ-011010	100X100 Box, 55MM Deep, Mixed KO	1/2", 3/4" & 1"	-
TZ-011515	150X150 Box, 55MM Deep, Mixed KO	1/2", 3/4" & 1"	-
TZ-012020	200X200 Box, 55MM Deep, Mixed KO	1/2", 3/4" & 1"	-
TZ-012525	250X250 Box, 55MM Deep, Mixed KO	1/2", 3/4" & 1"	-
TZ-013030	300X300 Box, 55MM Deep, Mixed KO	1/2", 3/4" & 1"	-
TZ-013535	350X350 Box, 55MM Deep, Mixed KO	1/2", 3/4" & 1"	-
TZ-014040	400X400 Box, 55MM Deep, Mixed KO	1/2", 3/4" & 1"	-
TZ-021010	100X100 Box, 75MM Deep, Mixed KO	1/2", 3/4" & 1"	-
TZ-021515	150X150 Box, 75MM Deep, Mixed KO	1/2", 3/4" & 1"	-
TZ-022020	200X200 Box, 75MM Deep, Mixed KO	1/2", 3/4" & 1"	-
TZ-022525	250X250 Box, 75MM Deep, Mixed KO	1/2", 3/4" & 1"	-
TZ-023030	300X300 Box, 75MM Deep, Mixed KO	1/2", 3/4" & 1"	-
TZ-023535	350X350 Box, 75MM Deep, Mixed KO	1/2", 3/4" & 1"	-
TZ-024040	400X400 Box, 75MM Deep, Mixed KO	1/2", 3/4" & 1"	-
TZ-031010	100X100 Box, 100MM Deep, Mixed KO	1/2", 3/4" & 1"	-
TZ-031515	150X150 Box, 100MM Deep, Mixed KO	1/2", 3/4" & 1"	-
TZ-032020	200X200 Box, 100MM Deep, Mixed KO	1/2", 3/4" & 1"	-
TZ-032525	250X250 Box, 100MM Deep, Mixed KO	1/2", 3/4" & 1"	-
TZ-033030	300X300 Box, 100MM Deep, Mixed KO	1/2", 3/4" & 1"	-
TZ-033535	350X350 Box, 100MM Deep, Mixed KO	1/2", 3/4" & 1"	-
TZ-034040	400X400 Box, 100MM Deep, Mixed KO	1/2", 3/4" & 1"	-

Switch and Socket Boxes

Material: Steel
Type: Square
Surface Finish: Galvanized
Thickness: 0.9MM
Standard: BS 4662

Applications

MTE ELECTRO Switch boxes are installed in walls or ceilings and are used to fix switches and Sockets



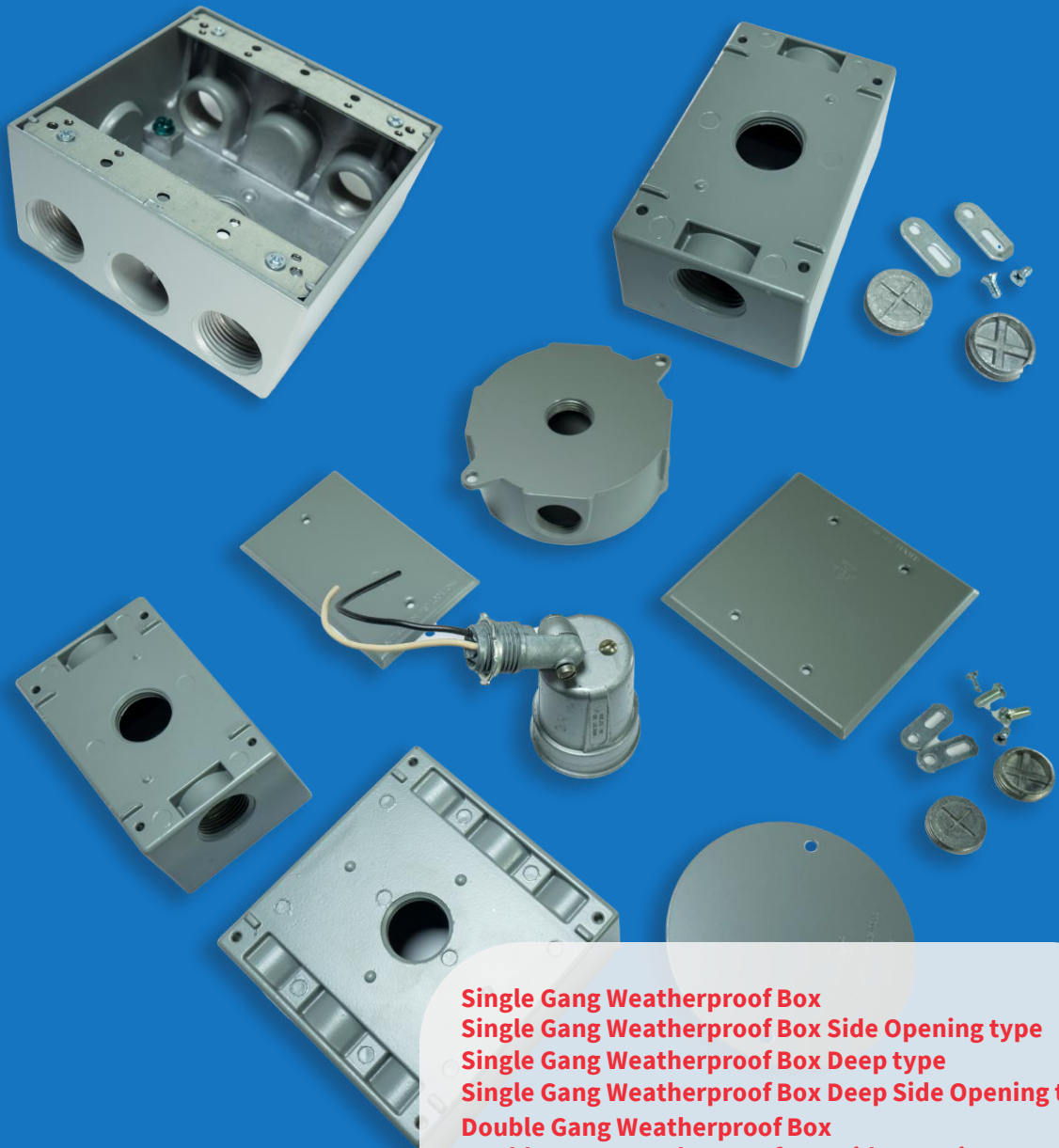
Boxes Without Earth Brass

CTALOGUE NUMBER	DESCRIPTION	KNOCKOUTS	
		SIDE	BOTTOM
3335	3X3" Switch Box(7X7 CM), 35MM Deep, 4 Fixed Fixing Lugs	(4) 20&25MM	(2) 20&25MM
3347	3X3" Switch Box(7X7 CM), 47MM Deep, 4 Fixed Fixing Lugs	(4) 20&25MM	(2) 20&25MM
3635	3X6" Switch Box(7X14 CM), 35MM Deep, 2 Fixed Fixing Lugs	(4) 20&25MM	(2) 20&25MM
3647	3X6" Switch Box(7X14 CM), 47MM Deep, 2 Fixed Fixing Lugs	(4) 20&25MM	(2) 20&25MM



Boxes With Earth Brass

CTALOGUE NUMBER	DESCRIPTION	KNOCKOUTS	
		SIDE	BOTTOM
3335EB	3X3" Switch Box(7X7 CM), 35MM Deep, 4 Fixed Fixing Lugs and Earth Brass	(4) 20&25MM	(2) 20&25MM
3347EB	3X3" Switch Box(7X7 CM), 47MM Deep, 4 Fixed Fixing Lugs and Earth Brass	(4) 20&25MM	(2) 20&25MM
3635EB	3X6" Switch Box(7X14 CM), 35MM Deep, 2 Fixed Fixing Lugs and Earth Brass	(4) 20&25MM	(2) 20&25MM
3647EB	3X6" Switch Box(7X14 CM), 47MM Deep, 2 Fixed Fixing Lugs and Earth Brass	(4) 20&25MM	(2) 20&25MM



Single Gang Weatherproof Box
Single Gang Weatherproof Box Side Opening type
Single Gang Weatherproof Box Deep type
Single Gang Weatherproof Box Deep Side Opening type
Double Gang Weatherproof Box
Double Gang Weatherproof Box Side Opening type
4" Round Weatherproof Box
Single Gang Cover
Double Gang Cover
Round Cover
Aluminum Closure Plug
Plastic Closure Plug
Lamp holder with sealing Gasket

Weatherproof Boxes

Single Weatherproof Electrical Boxes

Material: Aluminum die cast

Type: 1 gang

Surface Finish: Powder coated

Applications

1-Gang Weatherproof Electrical Box is a specialized enclosure designed for electrical installations in outdoor or moisture-prone environments. These boxes are used to house and protect wiring connections, switches, receptacles, or other electrical components from water, dust, and other environmental elements.

Features

- Superior commercial quality die cast metal construction
- Premium powder coat finish.
- Closure plugs, mounting hardware, and ground screw included
- 1/2", 3/4" or 1" knockouts

Single Gang Weatherproof Box 3 Holes type



CATALOG NUM BER	HOLE SIZE	DIMENSIONS			DESCRIPTION
		WIDTH	HEIGHT	DEPTH	
FSB50-3	1/2"	2-3/4"	4-1/2"	2"	3 Outlet Holes Aluminum die cast Volume: 18.3 cu. in.
FSB75-3	3/4"	2-3/4"	4-1/2"	2"	
FSB100-3	1"	2-3/4"	4-1/2"	2"	

Single Gang Weatherproof Box 4 Holes type



CATALOG NUM BER	HOLE SIZE	DIMENSIONS			DESCRIPTION
		WIDTH	HEIGHT	DEPTH	
FSB50-4	1/2"	2-3/4"	4-1/2"	2"	4 Outlet Holes Aluminum die cast Volume: 18.3 cu. in.
FSB75-4	3/4"	2-3/4"	4-1/2"	2"	

Single Gang Weatherproof Box 5 Holes type



CATALOG NUM BER	HOLE SIZE	DIMENSIONS			DESCRIPTION
		WIDTH	HEIGHT	DEPTH	
FSB50-5	1/2"	2-3/4"	4-1/2"	2"	5 Outlet Holes Aluminum die cast Volume: 18.3 cu. in.
FSB75-5	3/4"	2-3/4"	4-1/2"	2"	

Single Gang Weatherproof Box 5 Holes Side Opening type



CATALOG NUM BER	HOLE SIZE	DIMENSIONS			DESCRIPTION
		WIDTH	HEIGHT	DEPTH	
FSB50-5X	1/2"	2-3/4"	4-1/2"	2"	5X Outlet Holes Aluminum die cast Volume: 18.3 cu. in.
FSB75-5X	3/4"	2-3/4"	4-1/2"	2"	
FSB100-5X	1"	2-3/4"	4-1/2"	2"	

Single Gang Weatherproof Box 3 Holes Deep type



CATALOG NUM BER	HOLE SIZE	DIMENSIONS			DESCRIPTION
		WIDTH	HEIGHT	DEPTH	
DB50-3	1/2"	2-3/4"	4-1/2"	2" - 5/8"	3 Outlet Holes Aluminum die cast Volume: 23.8 cu. in.
DB75-3	3/4"	2-3/4"	4-1/2"	2" - 5/8"	

Single Gang Weatherproof Box 5 Holes Deep Side Opening type



CATALOG NUM BER	HOLE SIZE	DIMENSIONS			DESCRIPTION
		WIDTH	HEIGHT	DEPTH	
DB50-5X	1/2"	2-3/4"	4-1/2"	2" - 5/8"	5X Outlet Holes Aluminum die cast Volume: 23.8 cu. in.
DB75-5X	3/4"	2-3/4"	4-1/2"	2" - 5/8"	
DB100-5X	1"	2-3/4"	4-1/2"	2" - 5/8"	

Double Gang Weatherproof Electrical Boxes

Material: Aluminum die cast

Type: 2 gang

Surface Finish: Powder coated

Applications

2-Gang Weatherproof Electrical Box is an outdoor-rated enclosure designed to house and protect electrical devices from environmental elements such as water, dust, and debris. It can accommodate two electrical devices, such as switches, outlets, or a combination of both.

Features

- Superior commercial quality die cast metal construction
- Premium powder coat finish
- Closure plugs, mounting hardware, and ground screw included
- 1/2", 3/4" or 1" knockouts

Double Gang Weatherproof Box 3 Holes type



CATALOG NUM BER	HOLE SIZE	DIMENSIONS			DESCRIPTION
		WIDTH	HEIGHT	DEPTH	
TGB50-3	1/2"	4-9/16"	4-1/2"	2"	3 outlet holes Aluminum die cast Volume: 30.5 cu. in.
TGB75-3	3/4"	4-9/16"	4-1/2"	2"	

Double Gang Weatherproof Box 4 Holes type



CATALOG NUM BER	HOLE SIZE	DIMENSIONS			DESCRIPTION
		WIDTH	HEIGHT	DEPTH	
TGB50-4	1/2"	4-9/16"	4-1/2"	2"	4 outlet holes Aluminum die cast Volume: 30.5 cu. in.
TGB75-4	3/4"	4-9/16"	4-1/2"	2"	



Double Gang Weatherproof Box 5 Holes type



CATALOG NUM BER	HOLE SIZE	DIMENSIONS			DESCRIPTION
		WIDTH	HEIGHT	DEPTH	
TGB50-5	1/2"	4-9/16"	4-1/2"	2"	5 outlet holes Aluminum die cast Volume: 30.5 cu. in.
TGB75-5	3/4"	4-9/16"	4-1/2"	2"	
TGB100-5	1"	4-9/16"	4-1/2"	2"	

Double Gang Weatherproof Box 7 Holes type



CATALOG NUM BER	HOLE SIZE	DIMENSIONS			DESCRIPTION
		WIDTH	HEIGHT	DEPTH	
TGB50-7	1/2"	4-9/16"	4-1/2"	2"	7 outlet holes Aluminum die cast Volume: 30.5 cu. in.
TGB75-7	3/4"	4-9/16"	4-1/2"	2"	

Double Gang Weatherproof Box 5 Holes Deep type



CATALOG NUM BER	HOLE SIZE	DIMENSIONS			DESCRIPTION
		WIDTH	HEIGHT	DEPTH	
DTB50-5	1/2"	4-9/16"	4-1/2"	2-5/8"	5 outlet holes Aluminum die cast Volume: 39.1 cu. in.
DTB75-5	3/4"	4-9/16"	4-1/2"	2-5/8"	
DTB100-5	1"	4-9/16"	4-1/2"	2-5/8"	

Double Gang Weatherproof Box 5 Holes Side Opening type



CATALOG NUM BER	HOLE SIZE	DIMENSIONS			DESCRIPTION
		WIDTH	HEIGHT	DEPTH	
DTB50-5X	1/2"	4-9/16"	4-1/2"	2"	5 X-config Outlet Holes Aluminum die cast Volume: 30.5 cu. in.
DTB75-5X	3/4"	4-9/16"	4-1/2"	2"	
DTB100-5X	1"	4-9/16"	4-1/2"	2"	

Double Gang Weatherproof Box 6 Holes Side Opening type



CATALOG NUM BER	HOLE SIZE	DIMENSIONS			DESCRIPTION
		WIDTH	HEIGHT	DEPTH	
DTB50-6X	1/2"	4-9/16"	4-1/2"	2"	6 X-config Outlet Holes Aluminum die cast Volume: 30.5 cu. in.
DTB75-6X	3/4"	4-9/16"	4-1/2"	2"	

Double Gang Weatherproof Box 7 Holes Side Opening type



CATALOG NUM BER	HOLE SIZE	DIMENSIONS			DESCRIPTION
		WIDTH	HEIGHT	DEPTH	
DTB50-7X	1/2"	4-9/16"	4-1/2"	2"	7 X-config Outlet Holes Aluminum die cast Volume: 30.5 cu. in.
DTB75-7X	3/4"	4-9/16"	4-1/2"	2"	



Round Weatherproof Electrical Boxes

Material: Aluminum die cast

Type: Round

Surface Finish: Powder coated

Applications

Aluminum Round Weatherproof Electrical Boxes are specialized enclosures designed to protect electrical connections and components in outdoor or harsh environments. These round-shaped boxes are made from aluminum, providing excellent durability and resistance to corrosion.

Features

- Superior commercial quality die cast metal construction
- Premium powder coat finish.
- Closure plugs, mounting hardware, and ground screw included
- 1/2",3/4" knockouts



CATALOG NUM BER	HOLE SIZE	DIMENSIONS	DESCRIPTION
		DEPTH	
RB50-5	1/2"	1-1/2"	5 Outlet Holes Aluminum die cast Volume: 15.8 cu. in.
RB75-5	3/4"	1-1/2"	

Weatherproof Covers and Accessories

1 Gang Weatherproof Blank Cover



CATALOG NUM BER	DESCRIPTION
1-BC-A	Gasket included Device mounted Aluminum Blank Width: 2-3/4" Height: 4-1/2"

2 Gang Weatherproof Blank Cover



CATALOG NUM BER	DESCRIPTION
2-BC-A	Gasket included Device mounted Aluminum Blank Width: 4-9/16" Height: 4-1/2"



المواصفات السعودية
Saudi Standards



4" Round Weatherproof Blank Cover



CATALOG NUM BER	DESCRIPTION
RBC-4	Gasket included Device mounted Aluminum Blank

Single Gang Cover



CATALOG NUM BER	DESCRIPTION
RCT-1	1 Hole, KO Size: 1/2"
RCT-3	3 Holes, KO Size: 1/2"

Round Cover



CATALOG NUM BER	DESCRIPTION
RC-1	1 Hole, KO Size: 1/2"
RC-2	2 Holes, KO Size: 1/2"
RC-3	3 Holes, KO Size: 1/2"



Single Gang Cover

10 in 1 Vertical & Horizontal Multi-Use Cover



CATALOG NUM BER
1C-GV



Single Gang Cover

Horizontal GFCI



CATALOG NUM BER
:1C-GH

Single Gang Cover

Duplex Vertical



CATALOG NUM BER
1C-DV



Single Gang Cover

Receptacle Switch



CATALOG NUM BER
1C-SV



المواصفات السعودية
Saudi Standards



Single Gang Cover
Duplex Horizontal



CATALOG NUM BER
1C-DH



Single Gang Cover
20A/30A Receptacle & 30A/50A Receptacle

CATALOG NUM BER
1C-P050

Double Gang Cover
Duplex



CATALOG NUM BER
2C-2D



Double Gang Cover
Vertical-GFCI

CATALOG NUM BER
2C-2G

Aluminum Closure Plug



CATALOG NUM BER	KO SIZE
ACP-050	1/2"
ACP-075	3/4"
ACP-100	1"



Plastic Closure Plug

CATALOG NUM BER	KO SIZE
PCP-050	1/2"
PCP-075	3/4"
PCP-100	1"





Aluminum Lay-in Grounding Lug
Copper Lay-in Grounding Lug
Ground Rod Clamp
Split Bolt Connector

Grounding and Wire Accessories

Aluminum Lay-in Grounding Lug

Material: Aluminum

Type: Lay-in

Applications

Aluminum Lay-in Grounding Lugs are essential components for creating secure and reliable grounding connections in various electrical systems. Their ease of installation, durability, and versatility make them a preferred choice for grounding applications in solar installations, electrical panels, lighting systems, and more.



CATALOG NUM BER	LUG SIZE
GAL-001	4 - 14
GAL-002	1/0 - 8
GAL-003	3/0 - 6
GAL-004	250MCM - 6

Copper Lay-in Grounding Lug

Material: Copper alloy

Type: Lay-in

Applications

Copper Lay-in Grounding Lug is an electrical component designed to facilitate the secure and efficient connection of grounding conductors to a grounding point in various electrical systems. These lugs are crafted from copper, which is highly conductive and offers excellent corrosion resistance, making them ideal for both indoor and outdoor applications.



CATALOG NUM BER	LUG SIZE
GCL-001	4 - 14
GCL-002	1/0 - 8
GCL-003	3/0 - 6
GCL-004	250MCM - 6



Ground Rod Clamp

Material: Copper alloy

Type: Ground

Surface Finish: Nickeling

Applications

Ground Rod Clamps are crucial components for establishing a secure and effective grounding system in various electrical installations. Their secure connection, durability, and ease of installation make them an essential choice for ensuring the safety and functionality of electrical grounding systems.



CATALOG NUM BER	TRADE SIZE
GRC-050	1/2"
GRC-058	5/8"
GRC-075	3/4"

Split Bolt Connector

Material: Copper alloy

Type: Hex style head

Applications

Brass Split Bolt Connectors are essential components in electrical installations for securely joining wires. Their robust design, ease of use, and excellent electrical properties make them a reliable choice for ensuring safe and efficient electrical connections in a variety of applications.



CATALOG NUM BER	WIRE SIZE
SBC-001	#10
SBC-002	#8
SBC-003	#6
SBC-004	#6
SBC-005	#4
SBC-006	#2
SBC-007	1/0
SBC-008	2/0
SBC-009	3/0
SBC-010	4/0-250 MCM
SBC-011	350 MCM
SBC-012	500 MCM
SBC-013	750 MCM
SBC-014	1000 MCM



Aluminum Conduit Bender

Material: Aluminum
Type: For EMT
Surface Finish: Polishing

Applications

Aluminum EMT Conduit Bender is a crucial tool for electricians, offering efficiency and precision in the physical layout and installation of electrical conduits.



CATALOG NUM BER	CONDUIT SIZE
ACB-001	1/2"
ACB-002	3/4"
ACB-003	1"

Malleable Iron Conduit Bender

Material: Malleable iron
Type: For EMT
Surface Finish: Powder coated

Applications

Malleable Iron EMT Conduit Bender is another essential tool in the electrical field, designed to bend electrical metallic tubing (EMT), which is used to encase and protect electrical wires.



CATALOG NUM BER	CONDUIT SIZE
MCB-001	1/2"
MCB-002	3/4"
MCB-003	1"



Steel Conduit Bender Stick

Material: Steel

Surface Finish: Powder coated

Applications

Steel conduit bender stick are used with aluminum conduit bender or malleable iron conduit bender to bend the EMT conduit.



CATALOG NUM BER	BENDER SIZE
BDR-001	1/2" & 3/4"
BDR-002	1"

Steel Knock-out Seals

Material: Steel

Surface Finish: Zinc plated

Applications

Steel knock-out seals are metal discs or covers used to close off unused knock-out holes in electrical enclosures, junction boxes, and panel boards.



CATALOG NUM BER	TRADE SIZE
KOS-050	1/2"
KOS-075	3/4"
KOS-100	1"
KOS-125	1-1/4"
KOS-150	1-1/2"
KOS-200	2"





Aluminum Claw Cleat
Aluminum Two Bolt Cable Cleat
Aluminum Trefoil Cable Cleat
Multistrip Cable Cleat
PVC Single Bolt Cable Cleat
Nylon Two Bolt Cable Cleat
Nylon Trefoil Cable Cleat

Cable Cleats

Type : ACC

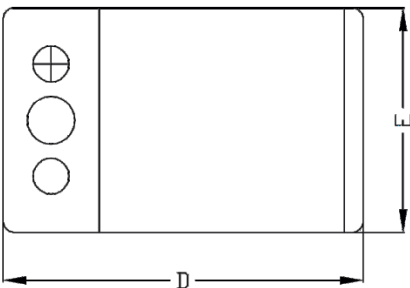
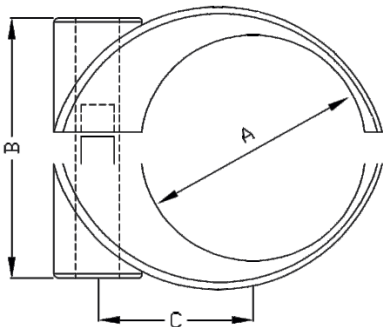
Aluminium
Claw Cleat (Single Bolt Cable Cleat)
For Single Cable Formation

- ✦ Manufactured From Aluminium Alloy
- ✦ Suitable For LV/MV Cables.
- ✦ Suitable For Use With Cables Dia 10mm to 61mm in 10 different sizes.
- ✦ Suitable for use with all standard ladder and tray system
- ✦ Can Be Used With All Types Of Cable Routes
- ✦ Can Be Stacked To A Minimum Of Three Of Three On One Fixing with extra Packing Piece.
- ✦ Two Piece,One Bolt Fixing Design
- ✦ Finish : Epoxy Coated
- ✦ Rubber Linear Optionally Available
- ✦ Operating temperatures -60°c to +120°c
- ✦ Tested in accordance with IEC 61914:2021



PART NO	CABLE DIAMETER		DIMENSIONS (mm)				BOLT FIXING SIZE
	A (mm)		B	C	D	E	
	MIN	MAX					
ACC 10-13	10	13	18	16	37	47	M10
ACC 13-16	13	16	19	18	40	47	M10
ACC 16-19	16	19	22	19	43	47	M10
ACC 19-22	19	22	26	20	46	47	M10
ACC 22-25	22	25	28	21	49	47	M10
ACC 25-32	25	32	34	25	56	47	M10
ACC 32-38	32	38	40	32	62	47	M10
ACC 38-44	38	44	46	32	68	47	M10
ACC 44-51	44	51	53	34	74	47	M10
ACC 51-61	51	61	52	32	85	47	M10

* Confirming To IEC 61914
* Tolerance Applied+/-3%



Type : ATC

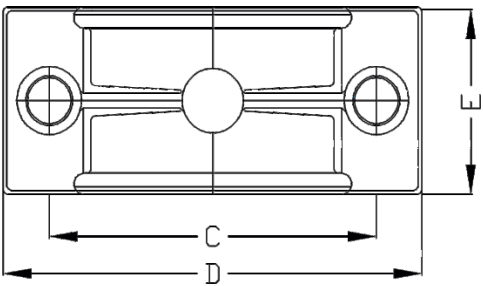
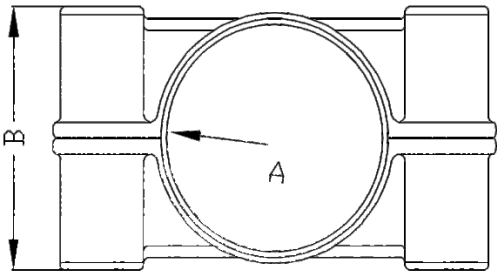
Aluminium
Two Bolt Cable Cleat
For Single Cable Formation

- ✦ Manufactured From Aluminium Alloy
- ✦ Suitable For LV/MV/HV Cables Dia 15mm To 160mm in 17 different sizes.
- ✦ Suitable for use with all standard ladder and tray system
- ✦ Can Be Double Stacked On Common Fixings
- ✦ Two Piece, Two Bolt Fixing Design
- ✦ Finish : Epoxy Coated
- ✦ Rubber linear Optionally available
- ✦ Operating temperatures -60°C to +120°C
- ✦ Tested in accordance with IEC 61914:2021



PART NO	CABLE DIAMETER		DIMENSIONS (mm)				BOLT FIXING SIZE
	A (mm)		B	C	D	E	
	MIN	MAX					
ATC 15-30	15	30	31	55	74	38	M8
ATC 30-40	30	40	47	75	98	45	M10
ATC 40-50	40	50	60	84	108	45	M10
ATC 51-57	51	57	66	84	114	48	M10
ATC 57-64	57	64	75	94	121	48	M10
ATC 64-70	64	70	80	98	123	48	M10
ATC 70-76	70	76	88	110	135	48	M12
ATC 76-83	76	83	96	117	142	51	M12
ATC 83-89	83	89	97	123	148	60	M12
ATC 89-95	89	95	105	130	156	62	M12
ATC 95-101	95	101	110	125	152	65	M12
ATC 101-108	101	108	118	137	165	65	M12
ATC 108-114	108	114	124	144	172	65	M12
ATC 115-125	115	125	126	149	174	85	M12
ATC 125-135	125	135	140	165	193	85	M12
ATC 135-150	135	150	153	176	208	76	M12
ATC 150-160	150	160	172	185	212	60	M12

*Confirming To IEC 61914
* Tolerance Applied+/-3%



Type : ATFC

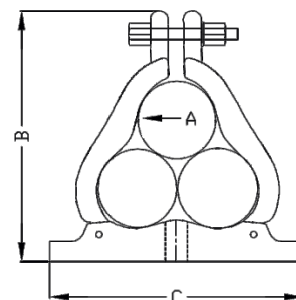
Aluminium Trefoil Cable Cleat

For Trefoil Cable Formation

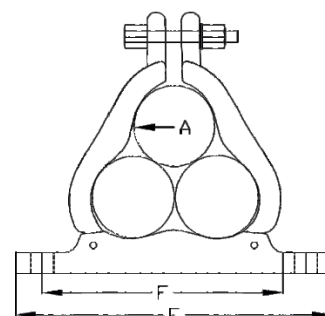
- ✦ Manufactured From Aluminium Alloy
- ✦ Suitable For LV/MV/HV Cable Dia 24mm to 76mm in 36 different sizes.
- ✦ Suitable for use with all standard ladder and tray system
- ✦ Three Piece, Single Bolt Fixing Design
- ✦ Two Bolt Fixing Design Available on Request
- ✦ Finish : Epoxy Coated
- ✦ Rubber Linear Optionally Available
- ✦ Operating temperatures -60°C to +120°C



PART NO.	CABLE DIAMETER		DIMENSIONS (mm)				
	A (mm)		B	D	Single Bolt Fixing	Two Bolt Fixing	
	MIN	MAX			C	E	F
ATFC 15-18	15	18	77	34	-	104	77
ATFC 18-22	18	22	85	34	-	116	87
ATFC 22-25	22	25	91	34	-	122	94
ATFC 24-25	24	25	97	37	85	126	101
ATFC 25-27	25	27	97	37	85	126	101
ATFC 27-28	27	28	97	37	85	130	104
ATFC 28-30	28	30	102	38	85	130	104
ATFC 30-32	30	32	105	38	85	133	107
ATFC 32-34	32	34	105	38	89	135	109
ATFC 34-35	34	35	112	38	96	138	113
ATFC 35-36	35	36	113	38	98	138	113
ATFC 36-38	36	38	116	38	98	140	114
ATFC 38-40	38	40	119	38	100	145	118
ATFC 40-41	40	41	122	38	108	147	121
ATFC 41-43	41	43	122	38	108	147	121
ATFC 43-44	43	44	127	38	108	152	126
ATFC 44-46	44	46	130	38	110	154	128
ATFC 46-48	46	48	133	38	116	157	130
ATFC 48-49	48	49	137	38	123	160	134
ATFC 49-51	49	51	140	38	119	165	136
ATFC 51-53	51	53	140	38	122	155	134
ATFC 53-54	53	54	145	38	129	172	141
ATFC 54-55.5	54	55.5	152	44	138	183	152
ATFC 55-57	55	57	155	44	138	187	155
ATFC 57-59	57	59	152	38	141	173	148
ATFC 59-60	59	60	165	44	148	195	162
ATFC 60-62	60	62	168	44	149	195	162
ATFC 62-63.5	62	63.5	170	44	156	202	168
ATFC 63.5-65	63.5	65	173	44	156	202	168
ATFC 65-66.5	65	66.5	173	44	156	202	168
ATFC 66.5-68	66.5	68	180	44	156	210	176
ATFC 68-70	68	70	180	44	158	210	176
ATFC 70-71.5	70	71.5	190	44	171	217	185
ATFC 71.5-73	71.5	73	190	44	171	217	185
ATFC 73-74.5	73	74.5	186	44	171	217	185
ATFC 74.5-76	74.5	76	189	44	166	220	186



Single
Bolt
Fixing



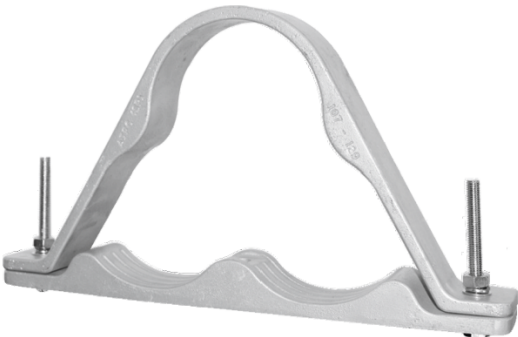
Two
Bolt
Fixing

Type : ATFC (SP)

Aluminium
Trefoil Cable Cleat (SP)

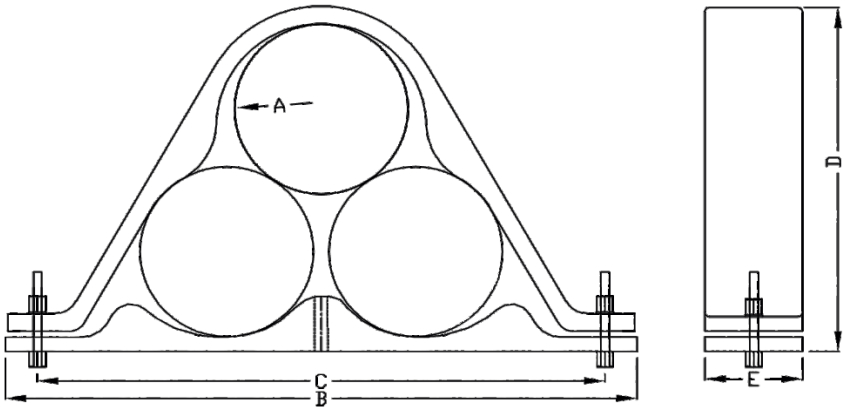
For Trefoil Cable Formation

- ✦ Manufactured From Aluminium Alloy
- ✦ Suitable For LV/MV/HV Cables Dia 15mm to 155mm in 8 different sizes.
- ✦ Suitable for use with all standard ladder and tray system
- ✦ Rubber Linear Optionally Available
- ✦ Two Piece , Two Bolt Fixing Design
- ✦ Finish : Epoxy Coated
- ✦ Operating temperatures -60°c to +120°c
- ✦ Tested in accordance with IEC 61914:2021



PART NO	CABLE DIAMETER		DIMENSIONS (mm)				BOLT FIXING SIZE
	A (mm)		B	C	D	E	
	MIN	MAX					
ATFC SP 15-30	15	30	107	82	52	30	M10
ATFC SP 30-45	30	45	150	121	74	31	M10
ATFC SP 45-60	45	60	182	153	93	40	M10
ATFC SP 60-75	60	75	222	195	122	40	M10
ATFC SP 75-90	75	90	263	237	152	40	M10
ATFC SP 90-107	90	107	316	283	177	50	M10
ATFC SP 107-129	107	129	392	340	221	50	M10
ATFC SP 129-155	129	155	446	400	257	58	M10

* Confirming To IEC 61914
* Tolerance Applied+/-3%



Type : AMC

Multistrap Cable Cleat

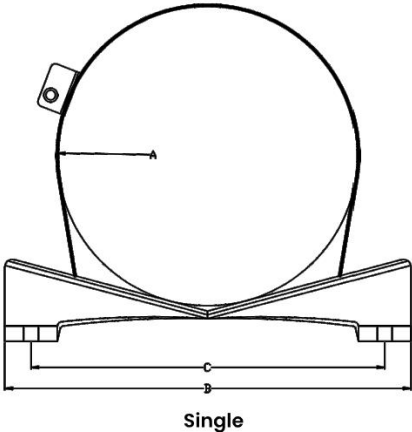
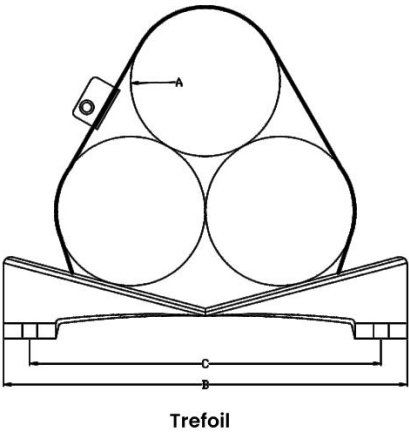
For Multiple Cable Formation



- ✦ Suitable For LV/MV/HV Cables.
- ✦ Suitable for 24mm to 130mm Dia Cables in 3 different sizes.
- ✦ Suitable for use with all standard ladder and tray system
- ✦ Non Magnetic Materials SS 304/SS 316 Used Throught
- ✦ Suitable For Dissimilar Groups Cables
- ✦ Can Be Used For All Types Of Cables Routes in Trefoil Group & Quad Group.
- ✦ Strap Complete With Tensioning Clip, Securing Pin and Winding Key
- ✦ Strap Length Varies Accroding To Cable Size Single And Three Cable Formation and Quad Formation
- ✦ Base Manufactured From Aluminium Alloy
- ✦ Operating temperatures -60°c to +120°c
- ✦ Tested in accordance with IEC 61914:2021

PART NO.	CABLE DIAMETER				B	C
	TREFOIL		SINGLE			
	A(mm)		A(mm)			
	Min	Max	Min	Max		
AMC01	24	45	36	60	120	95
AMC02	45	70	60	110	172	145
AMC03	70	120	90	130	270	242

* Confirming To IEC 61914
* Tolerance Applied+/-3%



Type : PSC

PVC
Single Bolt Cable Cleat

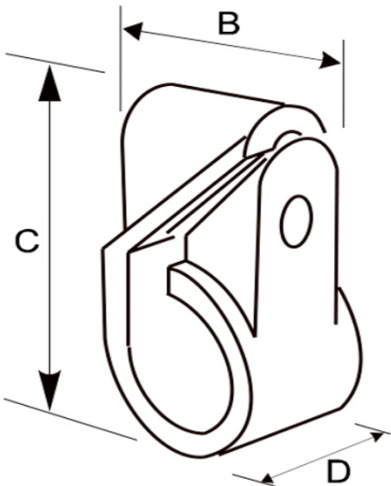
For Single Bolt Cable Cleat

- ✦ Manufactured From Low Density Polythelyene
- ✦ Material Colour : Black
- ✦ Suitable For Cable Dia 10.5mm to 51.1mm in 8 different sizes.
- ✦ Single Piece,Single Bolt Fixing Design



PART NO.	CABLE DIAMETER		DIMENSIONS			
	A (mm)		B (mm)		C	D
	MIN	MAX	MIN	MAX		
PSC 01 10.5-14.5	10.5	14.5	15	18	30	12
PSC 02 12.2-16.7	12.2	16.7	17	22	35	14
PSC 03 14.6-19.8	14.6	19.8	21	26	42	17
PSC 04 17.7-24.0	17.7	24.0	25	31	49	19
PSC 05 21.7-28.5	21.7	28.5	30	37	56	20
PSC 06 26.2-34.2	26.2	34.2	35	43	61	22
PSC 07 31.9-41.6	31.9	41.6	42	52	75	24
PSC 08 39.3-51.1	39.3	51.1	50	60	85	25

* Confirming To IEC 61914
* Tolerance Applied+/-3%



Type : NTC

Nylon
Two Bolt Cable Cleat

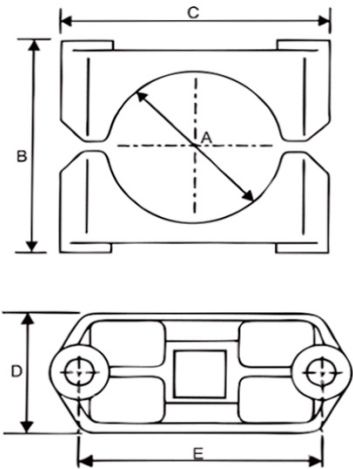
For Single cable formation



- ✦ Material : Nylon 06
Nylon Glassfilled
Low-Smoke Zero- Halogen (LSOH or LSZH)
- ✦ Material Colour : Black
- ✦ Two Piece , Two Bolt Fixing Design
- ✦ Suitable for use with all standard ladder and tray system
- ✦ Suitable For Cable Dia 25mm to 135mm in 9 Different Sizes
- ✦ Can Be Double Stacked on Common Fixing.
- ✦ UV Resistant
- ✦ Operating temperatures -20°c to +60°c
- ✦ Weather and Oil Resistant.
- ✦ Suitable For LV/MV/HV Cables.
- ✦ Tested in accordance with IEC 61914:2021

PART NO.	CABLE DIAMETER		DIMENSIONS				BOLT FIXING SIZE
	A(mm)		B	C	D	E	
	MIN	MAX					
NTC 00 25-50	25	50	62	96	45	74	M10
NTC 01 50-58	50	58	80	102	45	80	M10
NTC 02 56-64	56	64	84	102	45	80	M10
NTC 03 62-70	62	70	87	114	45	92	M10
NTC 04 68-76	68	76	95	114	50	92	M10
NTC 05 74-82	74	82	100	125	50	104	M10
NTC 06 80-88	80	88	110	125	50	104	M10
NTC 07 86-94	86	94	110	135	60	114	M10
NTC 08 95-110	95	110	115	155	60	134	M10
NTC 09 110-135	110	135	135	181	60	156	M10

* Confirming To IEC 61914
* Tolerance Applied+/-3%



Type : NTFC

Nylon
Trefoil Cable Cleats

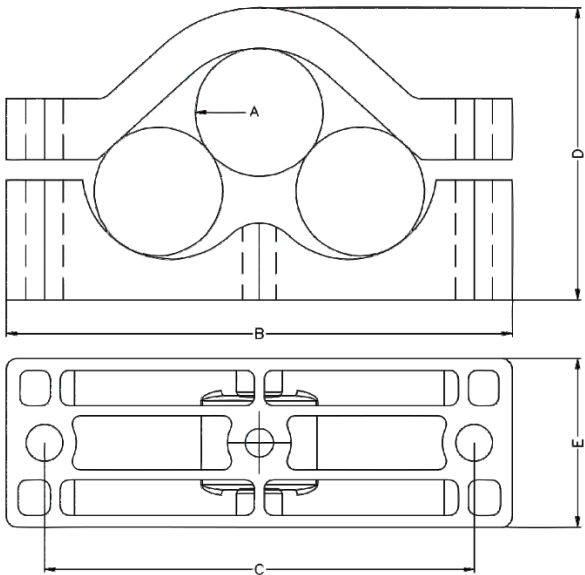
For Trefoil Cable Formation



- ✦ Material : Nylon 06
Nylon Glassfilled
Low-Smoke Zero- Halogen (LSOH or LSZH)
- ✦ Colour: Black
- ✦ Suitable For Cable Dia 27mm to 69mm in 3 Different Sizes
- ✦ Two Piece, Two Bolt Fixing Design.
- ✦ Suitable for use with all standard ladder and tray system.
- ✦ Operating temperatures -20°c to +60°c
- ✦ UV Resistant
- ✦ Weather & Oil Resistant
- ✦ Suitable For LV/MV/HV Cables.

PART NO,	CABLE DIAMETER		DIMENSIONS				BOLT FIXING SIZE
	A(mm)		B	C	D	E	
	MIN	MAX					
NTFC 01 27-38	27	38	120	100	60	45	M10
NTFC 02 38-51	38	51	150	128	81	50	M10
NTFC 03 51-69	51	69	200	171	109	50	M10

* Confirming To IEC 61914
* Tolerance Applied +/-3%





MTE ELECTRO[®]

ELECTRICAL CONDUITS AND ACCESSORIES



**5354, King Fahad Road
Hizam Al Akhdar
Al Khobar 34433
Kingdom Of Saudi Arabia**



**Tel: +966 13 664 0070
Mob: +966 59 487 9869
+966 55 786 1331**

**Email: sales@mte-electro.com.sa
Website: www.mte-electro.com.sa**